



## Ad hoc action

Use of the IMAGE self-diagnostic tool to support the development of a quality management system in European animal gene banks



WG ex situ 06 05 2025 – AHA QMS

1

## General information

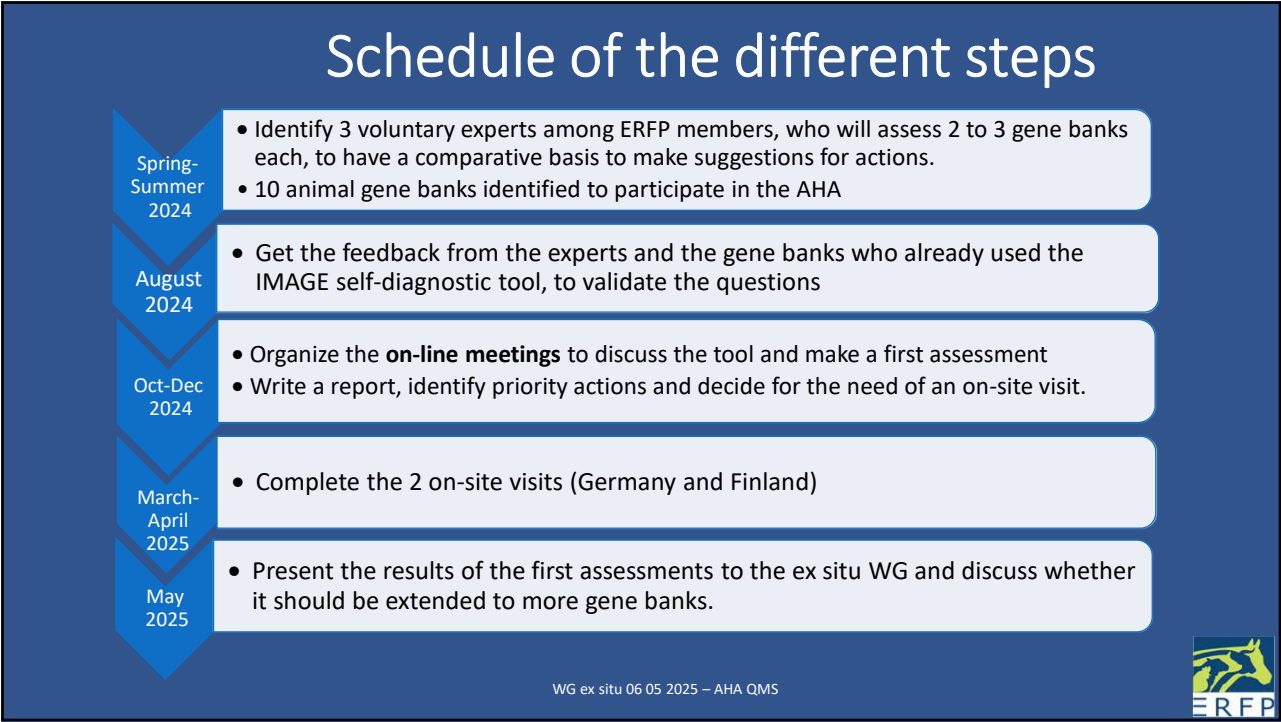
- Proposition initially made by Michèle Tixier-Boichard (INRAE) and validated by the ERFP SC in 2021 but delayed due to time constraints. EUGENA and now EU Reference Centre on Endangered Animal Breeds are also interested in the approach
- Goal : help standardize the management practices in animal gene banks and guide them towards implementation of a QMS
- How ? Using the self-diagnostic tool prepared during the H2020 IMAGE project to help a gene bank to assess its progress towards a full QMS



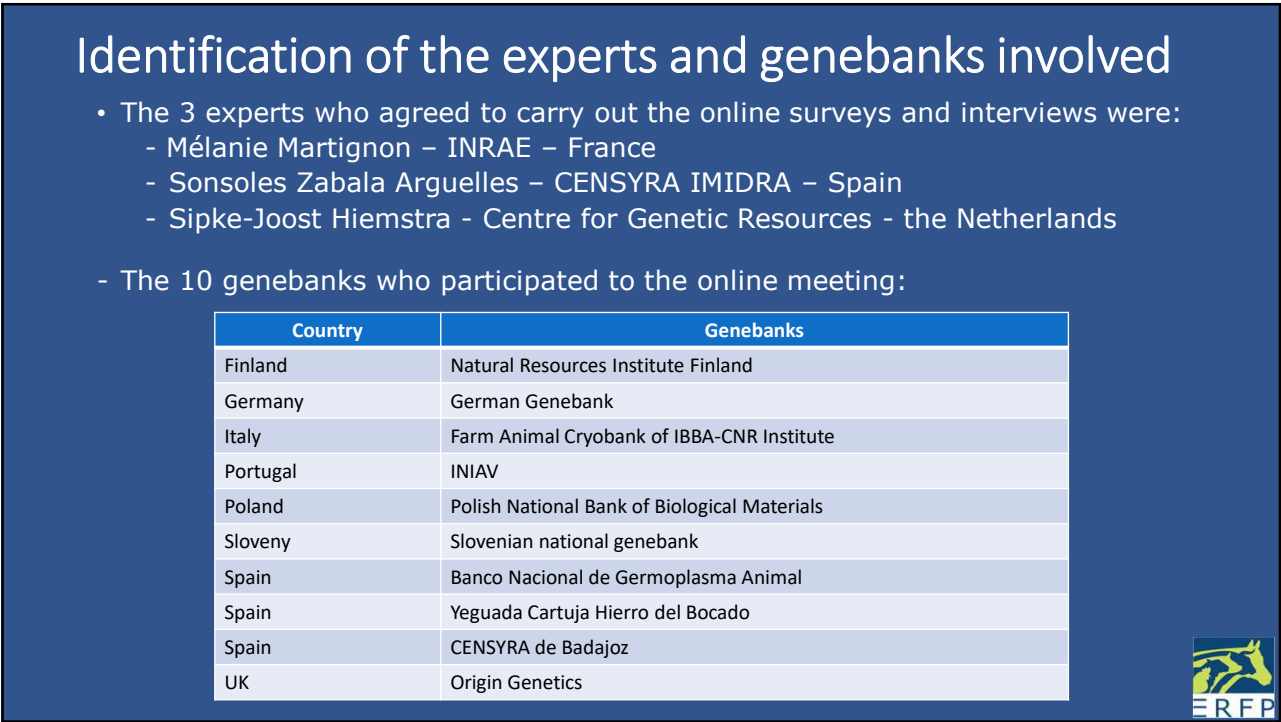
WG ex situ 06 05 2025 – AHA QMS



2



3



4

# Results of the 10 on-line meetings – IMAGE survey

Field of the questions	Genebank										Average score	Maximum score
	1	2	3	4	5	6	7	8	9	10		
A- General gene bank management	7	5	7	5	10	3	10	7	10	9	7,3	12
B- General quality management	5	6	6	10	16	6	12	16	14	16	10,7	16
C- Gene bank equipment	6	6	2	4	4	6	6	6	6	5	5,1	6
D- Gene bank personnel	7	4	4	8	7	8	6	6	6	8	6,2	8
E- Genetic material database	1	6	6	6	6	5	4	6	6	5	5,1	6
F- Genetic material acquisition	1	2	0	2	2	2	2	2	2	2	1,7	2
G- Material collection (if relevant)	6	6	6	6	6	6	6	6	6	6	6,0	6
H- Introduction of previously processed material (if relevant)	8	3		8	5	3	6	7	7	4/4	5,9	8
I- Material storage	5	6	6	6	4	6	6	6	6	6	5,7	6
J- Material distribution	2	4		4	2	2	4	4	4	4	3,3	4
TOTAL score	48	48	37/62	59	62	47	62	66	67	65	56,1	74

- High total scores for many genebanks
- Fields with high score: material collection, mat. storage, equipment =>genebank's core business
- Fields with low scores: general management and quality management =>not linked with the operational activities, important to develop them during the process but maybe lack of tools or methods to achieve ?

WG ex situ 06 05 2025 – AHA QMS



5

## The 2 on-site visits

- According to the budget, the limited availability of the experts and the choice to send 2 persons for each visit, 2 genebanks were visited to benefit of personalised advices and awariness of ISO 9001:
  - the German National genebank by Mélanie Martignon and Sipke-Joost Hiemstra in March
  - the Natural Resources Institute of Finland by Mélanie Martignon and Delphine Duclos in April.
- Feedbacks show that the approach is worthwhile for genebanks interested in the process to develop a QMS (particularly when it is not too advanced), especially with a two-person team: one person with expertise in QMS and a second with the experience of its own genebank. Mélanie's approach showing the process with "DEMING Circle" was particularly appreciated or the work on a SWOT analysis. Of course, a single on-site visit is not enough to really go deep in the formalisation of the QMS but it does provide an opportunity for interesting discussions and external feedback to suggest methods or possible improvements for the future.



WG ex situ 06 05 2025 – AHA QMS



6

## How to continue the work, some proposals

- The IMAGE self-diagnostic tool seems to be a good way to identify strengths and points to be developed. The total score can indicate whether the process is advanced or not (e.g. : more than 60 points, the process is almost complete)
- Facilitate the exchanges of document templates needed for a QMS (for example: table of relevant stakeholders, PESTEL analysis for external factors, SWOT analysis...).
- => More generally, what kind of documents/protocols could be shared (translated) between genebanks for inspiration at ERFP level ?
- Organise a peer review/on-site visit system for interested genebanks (e.g. within EUGENA) seems to be interesting. Volunteer experts needed, and travel costs could be (partly) covered by ERFP/EUGENA ?

WG ex situ 06 05 2025 – AHA QMS



7

## What would we like to propose to the next general assembly ?

- Suggest a number of visits per year (or for 2-3 years) with expert travels ?
- New ad hoc action needed ?
- Part of EUGENA budget ?
- Who will coordinate it ?

WG ex situ 06 05 2025 – AHA QMS



8