



Annual report of the Working Group *In situ* conservation and valorization of Animal Genetic Resources

Chair: Holger Göderz

ERFP General Assembly
23rd August 2025
Innsbruck, Austria



1



European Regional Focal Point for Animal Genetic Resources


www.animalgeneticresources.net

Members of the WG *In situ* conservation

Country	Name Member	Surname
Albania	Kristaq	KUME
Austria	Beate	BERGER
Croatia	Ante	IVANKOVIĆ
Finland	Juha	KANTANEN
France	Coralie	DANCHIN
Georgia	Tornike	ZHGENTI
Germany	Holger	GÖDERZ
Greece	Dimitrios	TSIOKOS
Iceland	Birna K.	BALDURSDÓTTIR
Italy	Fabio	PILLA
Latvia	Anna	ZELTKOVSKA
Lithuania	Ruta	ŠVEISTIENĖ
Montenegro	Milan	MARKOVIC
Nordgen	Mervi	HONKATUKIA (O)
Norway	Peer	BERG
Poland	Agnieszka	CHEŁMIŃSKA
Portugal	Nuno	CAROLINO
Rare Breeds International (RBI)	Juan Vicente	DELGADO BERMEJO(O)
Serbia	Srdjan	STOJANOVIĆ
Slovakia	Ján	TOMKA
Slovenia	Danijela	BOJKOVSKI
Spain	Jesus	FERNANDEZ MARTIN
Switzerland	Philippe	AMMANN
The Netherlands	Mira	SCHOON
United Kingdom	Marcus	BATES

- NCs are invited to nominate experts
- If expert is not able to attend WG meeting, NC can nominate replacement for the specific meeting
- Travel costs for attending the meeting will be reimbursed by ERFP

2



European Regional Focal Point for Animal Genetic Resources www.animalgeneticresources.net

Annual WG meeting


Annual ERFP Working Group Meetings 6th/7th May 2025, Athens

Meeting WG *In situ* conservation
-> see activities on the next slides

Joint meeting with WG Documentation and Information
-> Transboundary breeds and assessment of breed risk status

Joint meeting with WG Ex situ conservation
-> Integration of *ex situ* and *in situ* approaches (-> see Ad hoc action)

3




European Regional Focal Point for Animal Genetic Resources www.animalgeneticresources.net

Annual WG meeting

- **Work on related Ad hoc actions**
 - Identifying of Simmental cattle in Europe (Jan Tomka)
 - Native horses network (Ruta Sveistine)
 - Transhumance in the Alps (Fabio Pilla)
 - Special characteristics of native and local breeds for landscape management and ecosystem services (Jesus Fernandez/Enrico Sturaro/Danijela Bojkovski/Holger Göderz)
 - Innovative and multifunctional concept for farm animal genetic resource conservation: Europe's success story (Ante Ivanković)
 - Integration of *in situ* and *ex situ* conservation approaches (Ewa Sosin/Fernando Tejerina Ampudia/Holger Göderz)

4



European Regional Focal Point for Animal Genetic Resources


www.animalgeneticresources.net

Annual WG meeting

- **Work on related Ad hoc actions**
 - Identifying of Simmental cattle in Europe (Jan Tomka)
 - Native horses network (Ruta Sveistine)
 - Transhumance in the Alps (Fabio Pilla)
 - Special characteristics of native and local breeds for landscape management and ecosystem services (Jesus Fernandez/Enrico Sturaro/Danijela Bojkovski/Holger Göderz)
 - Innovative and multifunctional concept for farm animal genetic resource conservation: Europe's success story (Ante Ivanković)
 - Integration of in situ and ex situ conservation approaches (Ewa Sosin/Fernando Tejerina Ampudia/Holger Göderz)

Red ones are finalized

5



European Regional Focal Point for Animal Genetic Resources

www.animalgeneticresources.net

Ad hoc actions

Special characteristics of native and local breeds for landscape management and ecosystem services
(Jesus Fernandez/Danijela Bojkovski/Enrico Sturaro/Holger Göderz)


Work Package 1: Analysis of data available/literature review on indicators of ecosystems services and native and local breeds (Jesus)

Work Package 2: Collection of Best Practice Examples (Danijela)

Work Package 3: Survey among breed societies about specific characteristics and traits of the breeds (Holger)

Work Package 4: Creation of final report (Nordgen)

6

European Regional Focal Point for Animal Genetic Resourceswww.animalgeneticresources.net


Ad hoc actions

Special characteristics of native and local breeds for landscape management and ecosystem services

(Jesus Fernandez/Danijela Bojkovski/Enrico Sturaro/Holger Göderz)

- Requests for information/examples have been sent out to the ERFP network
- Analysis of collected information
- Creation of final report/GenRes Journal article (planned for the end of 2025)
- Webinars for breed societies and nature protection community are planned

7

European Regional Focal Point for Animal Genetic Resourceswww.animalgeneticresources.net


Ad hoc actions

Integration of in situ and ex situ conservation approaches

(Ewa Sosin/Fernando Tejerina Ampudia/Holger Göderz)

- Recommendation of AnGR Strategy
- First exchange at joint meeting of WG Ex situ conservation and WG In situ conservation in Cyprus 2024
- Presentation to ERFP General Assembly 2024
- Ad hoc action proposal (approved by the ERFP Steering Committee in December 2024)

8



European Regional Focal Point for Animal Genetic Resources


www.animalgeneticresources.net

Ad hoc actions

Integration of in situ and ex situ conservation approaches

(Ewa Sosin/Fernando Tejerina Ampudia/Holger Göderz)

February 2025	Determination of participants
March/April 2025	Online kick off meeting; distribution of tasks
April - December 2025	Collection and analysis of information <ul style="list-style-type: none">• Already existing national strategies and action plans• Examples of integrated approaches in European countries
October/November 2025	Physical meeting <ul style="list-style-type: none">• Analysis of collected information• Way forward and distribution of tasks for creation of guidelines and paper for Genetic Resources Journal
January – May 2026	Preparation of guidelines and paper



European Regional Focal Point for Animal Genetic Resources


www.animalgeneticresources.net

Ad hoc actions

Integration of in situ and ex situ conservation approaches

(Ewa Sosin/Fernando Tejerina Ampudia/Holger Göderz)

February 2025	Determination of participants
March/April 2025	Online kick off meeting; distribution of tasks
April - December 2025	Collection and analysis of information <ul style="list-style-type: none">• Already existing national strategies and action plans• Examples of integrated approaches in European countries
October/November 2025	Physical meeting <ul style="list-style-type: none">• Analysis of collected information• Way forward and distribution of tasks for creation of guidelines and paper for Genetic Resources Journal
January – May 2026	Preparation of guidelines and paper




European Regional Focal Point for Animal Genetic Resources

www.animalgeneticresources.net

Annual WG meeting

- **How is AnGR management and conservation included in the national legislation?**
(lead: Danijela Bojkovski, Holger Göderz)
- **How is In situ conservation understood in different countries?**
(lead: Srdjan Stojanović)
- **Input to and exchange with EURC-EAB for further work on in situ related topics** (inter alia Working Group for the assessment of breed risk status)

11




European Regional Focal Point for Animal Genetic Resources

www.animalgeneticresources.net

Annual WG meeting

- **How is AnGR management and conservation included in the national legislation?**
(lead: Danijela Bojkovski, Holger Göderz)
- **How is In situ conservation understood in different countries?**
(lead: Srdjan Stojanović)
- **Input to and exchange with EURC-EAB for further work on in situ related topics** (inter alia Working Group for the assessment of breed risk status)

12

European Regional Focal Point for Animal Genetic Resourceswww.animalgeneticresources.net

AnGR management and conservation in national legislations

Meeting of the WG In situ conservation 23rd/24th April 2024, Nicosia

- Presentations from Slovenia and Germany about inclusion of AnGR management in national legislation
- Discussion showed that this topic is interesting and should be further investigated
- Included in the WG workplan for 2024/25
(Approved by the General Assembly in August 2024)

13


European Regional Focal Point for Animal Genetic Resourceswww.animalgeneticresources.net

AnGR management and conservation in national legislations

Questionnaire to ERFP network

- Notice, that focus is on **legal regulations** (not on programmes etc. without a legal status)
- Sent out to ERFP network (NCs and experts of all 3 WGs) on 10th April 2025
- (First) deadline for submission 23rd April 2025
- Reminder on 25th July with deadline 12th August 2025
(21 answers so far)

14



European Regional Focal Point for Animal Genetic Resources

www.animalgeneticresources.net

AnGR management and conservation in national legislations

Questionnaire to ERFP network

- Differentiation between regulations concerning
 - Monitoring
 - Conservation
 - Sustainable use
- Breeds included by the regulations
 - Native
 - Locally adapted
 - Exotic
 - Other

15



European Regional Focal Point for Animal Genetic Resources

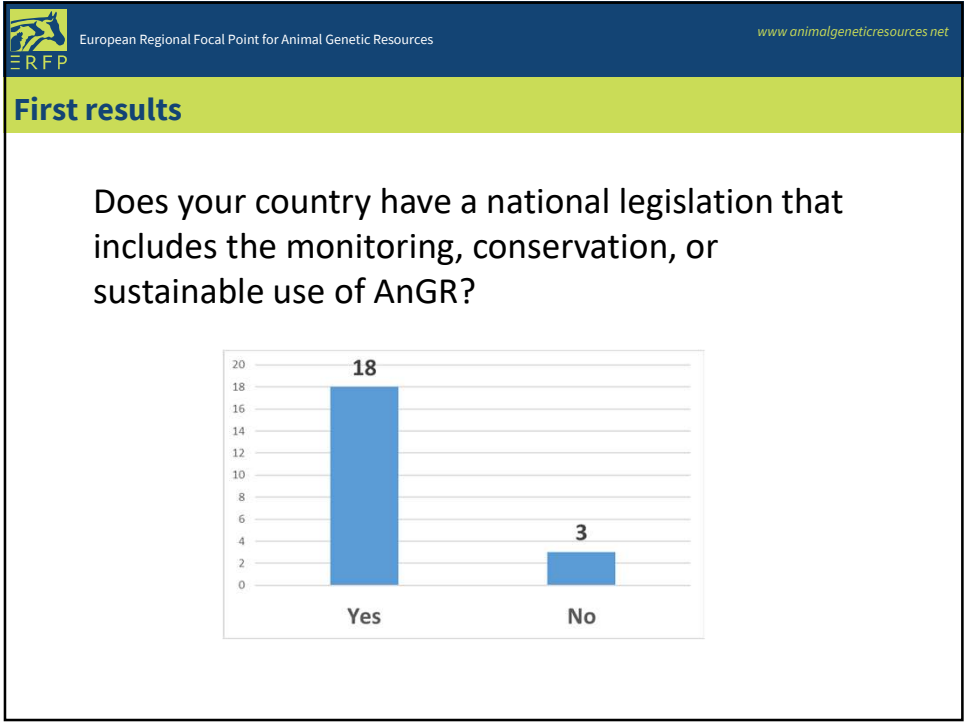
www.animalgeneticresources.net

AnGR management and conservation in national legislations

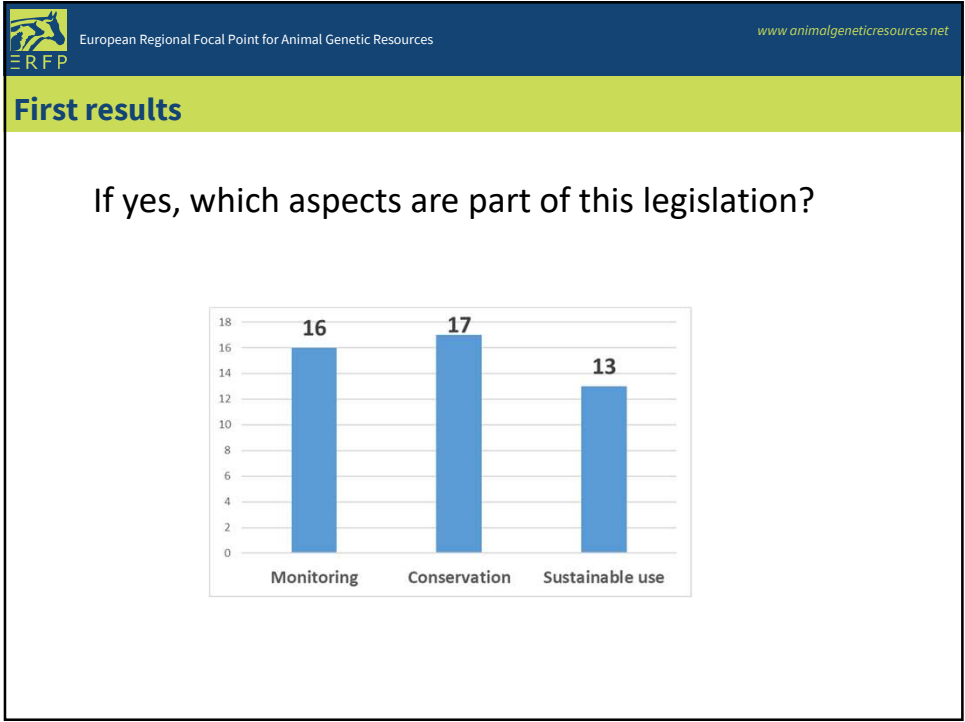
Questionnaire to ERFP network

- State driven in situ in vivo conservation
- Regulations for recognition of breeds and breeding programmes
- International cooperation
- General comments

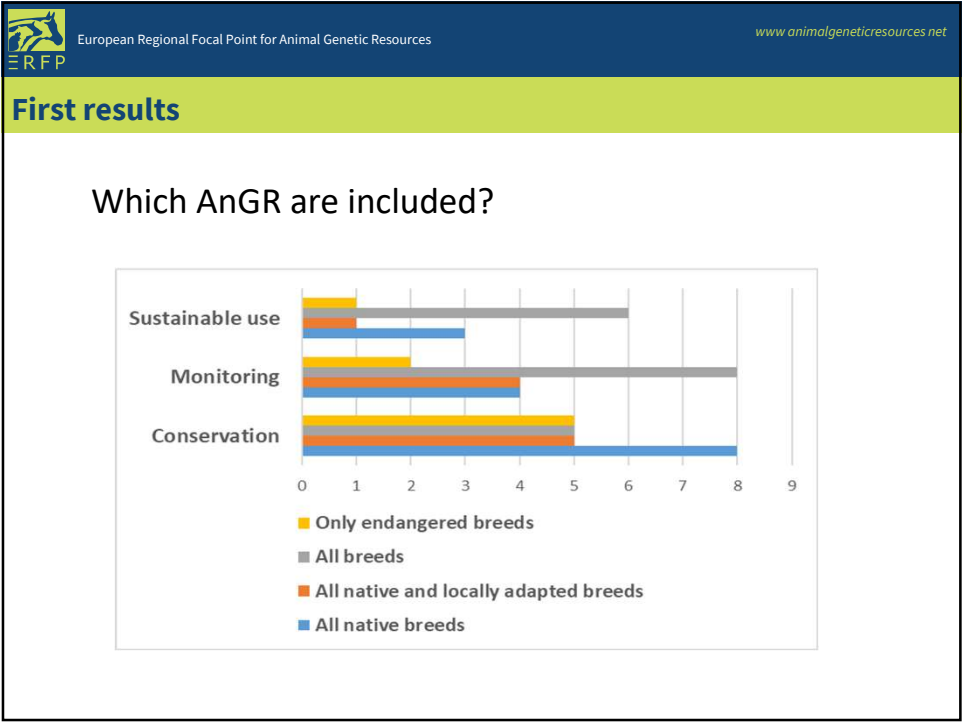
16



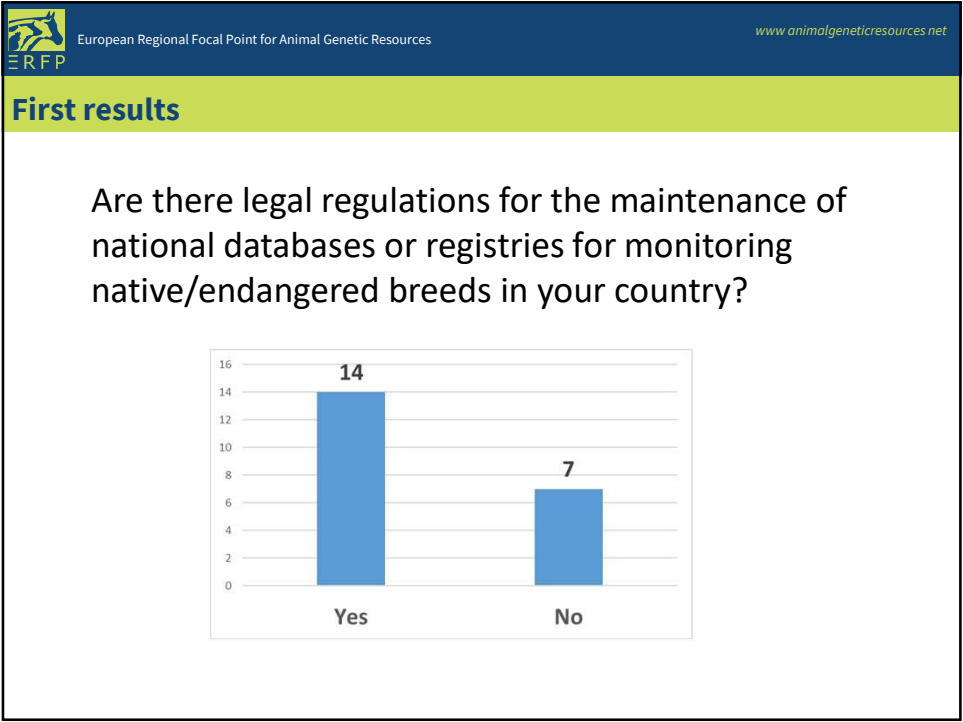
17



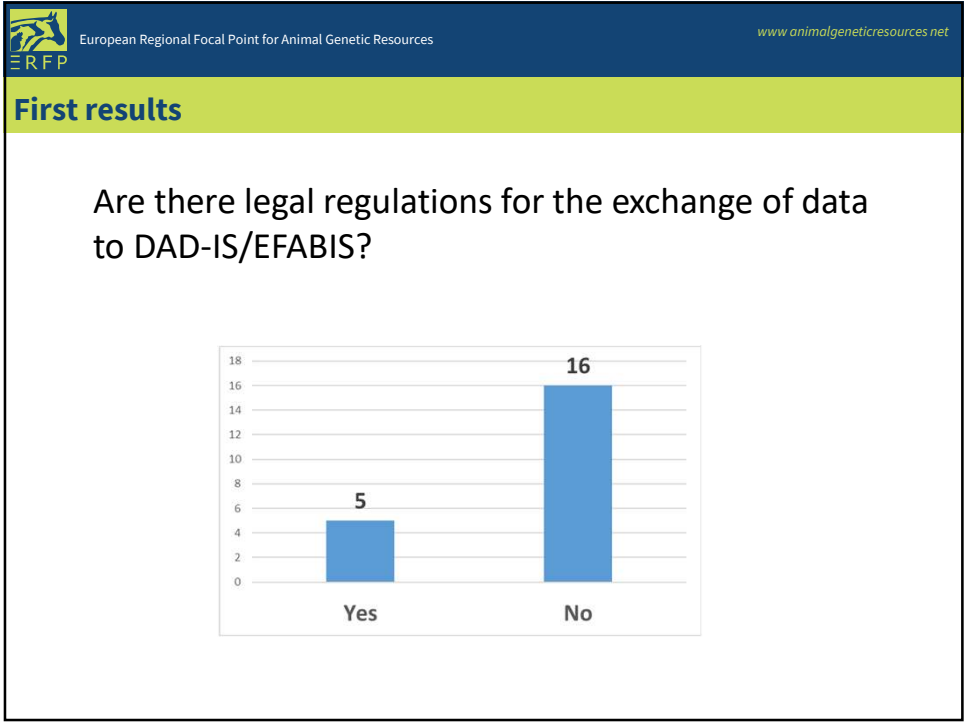
18



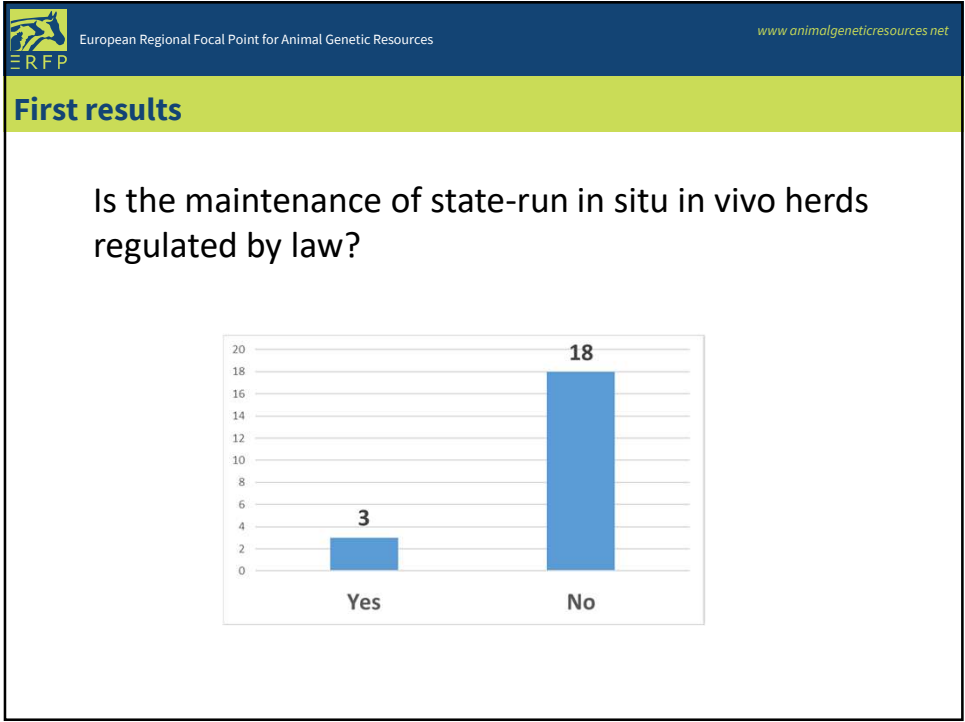
19



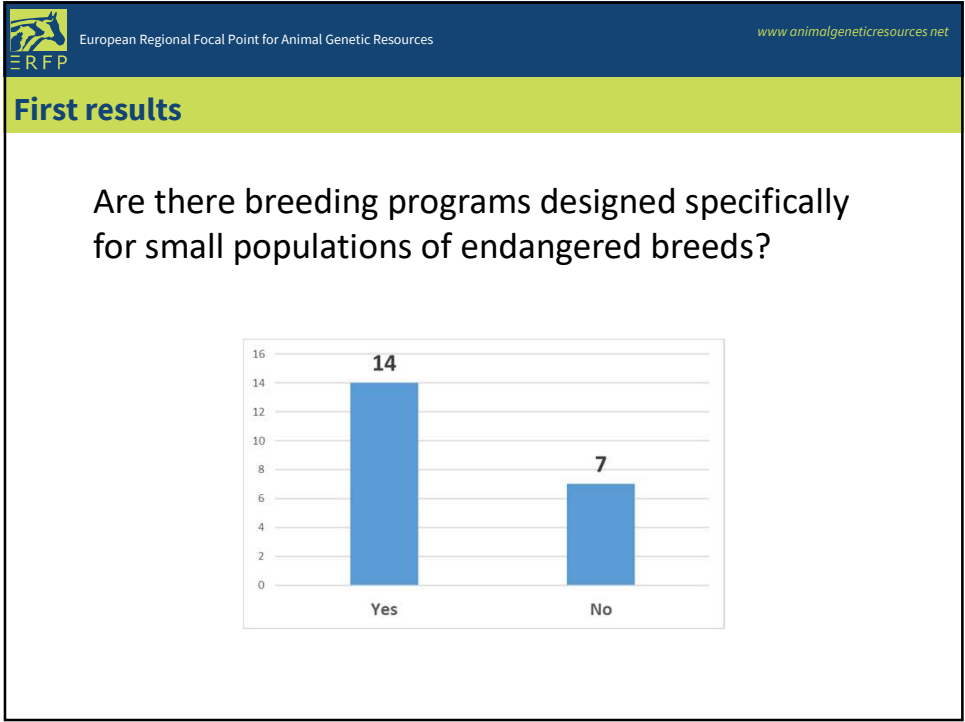
20



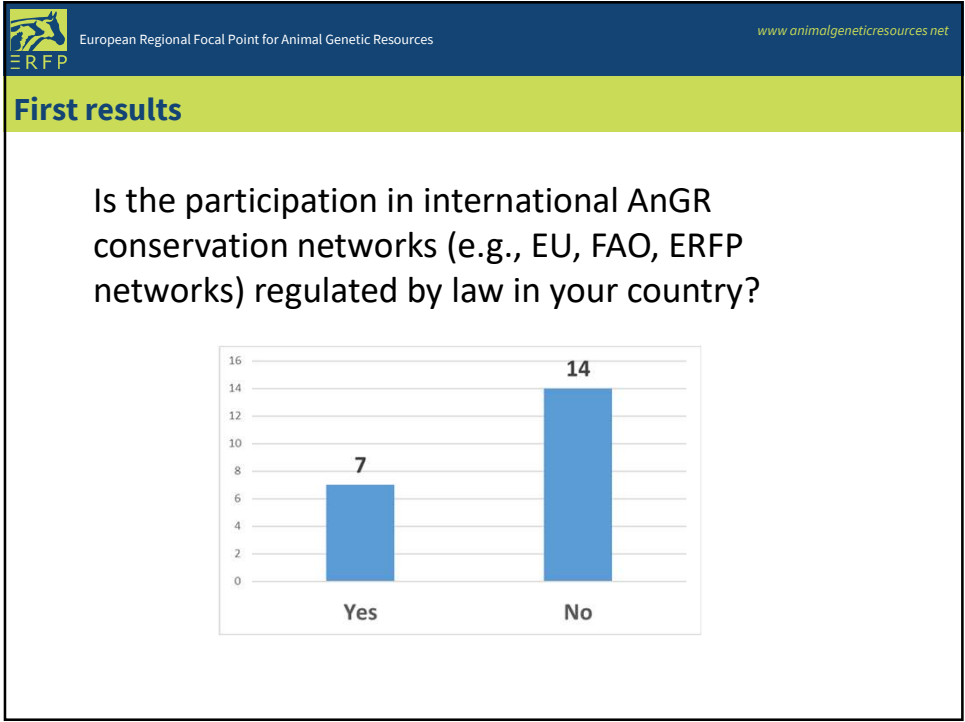
21




22



23



24




European Regional Focal Point for Animal Genetic Resources

www.animalgeneticresources.net

First conclusions

- In situ conservation/management of AnGR is mostly included in national legislations of participating countries
- legislations on agriculture in general or special legislation on livestock/animal breeding
- Sustainable use less regulated than conservation and monitoring
- Conservation of native breeds and monitoring (all breeds) are mostly indicated aspects

25




European Regional Focal Point for Animal Genetic Resources

www.animalgeneticresources.net

First conclusions

- Monitoring in the majority for all breeds in the country
- Maintenance of national databases is mostly regulated by law, but not the exchange with DAD-IS/EFABIS
- Participation in international AnGR networks is regulated in half of the participating countries
- General problems identified:
 - Networking/connection between actors in the countries
 - Stronger commitment for conservation and sustainable use of AnGr needed
 - Funding

26

European Regional Focal Point for Animal Genetic Resourceswww.animalgeneticresources.net


Discussion

Feedback of the General Assembly

Did we forget something?

How should we go on?

27

European Regional Focal Point for Animal Genetic Resourceswww.animalgeneticresources.net

Virtual meeting

Virtual WG meeting on 17th June 2025

- ERFP Steering Committee and ERFP Secretariat started the process of evaluation and update of the ERFP actions indicated in the action plan related to the European AnGR Strategy
- Working Groups were asked to meet virtually to this topic
- Contribution of WG In situ has been sent to Steering Committee and Secretariat on 8th July 2025


28


European Regional Focal Point for Animal Genetic Resources
www.animalgeneticresources.net

Work Plan 2025/2026 (To be approved by the ERFP GA)

- **Work on ongoing Ad hoc action**
 - Special characteristics of native and local breeds for landscape management and ecosystem services
 - Integration of in situ and ex situ conservation approaches
 - Innovative and multifunctional concept for farm animal genetic resource conservation: Europe's success story
- **How is in situ conservation understood in different countries?**

29


European Regional Focal Point for Animal Genetic Resources
www.animalgeneticresources.net

Work Plan 2025/2026 (To be approved by the ERFP GA)

- **Inclusion of AnGR management and conservation in the national legislations**
- **Collaboration with WG Docu and EURC-EAB** in assessment of breeding programmes, effective population size, breed risk status
- **Investigations on semi feral herds (Ad hoc action?)**
- **Definition of ex situ in vivo herds?**

30