

# INTERNATIONAL WORKSHOP TRANSHUMANCE AND LOCAL BREEDS



## THE INTANGIBLE VALUES OF TRANSHUMANCE

letizia bindi, Università degli Studi del Molise  
'BIOCULT' Centre of Research





**SOCIABILITY, KINSHIP SYSTEMS,  
SOCIAL DIVISION OF LABOR,  
HIERARCHIES AND CUSTOMARY RULES**





**A RITUALLY AND CULTURALLY MAPPED TERRITORY,  
AN ARCHAEOLOGICAL HERITAGE**







**PATHWAYS AND HUMAN/ANIMAL ENTANGLEMENTS**





## PASTORALISM AS A BIOCULTURAL HERITAGE





**COMPETENCES, GOVERNANCE,  
PARTICIPATION**



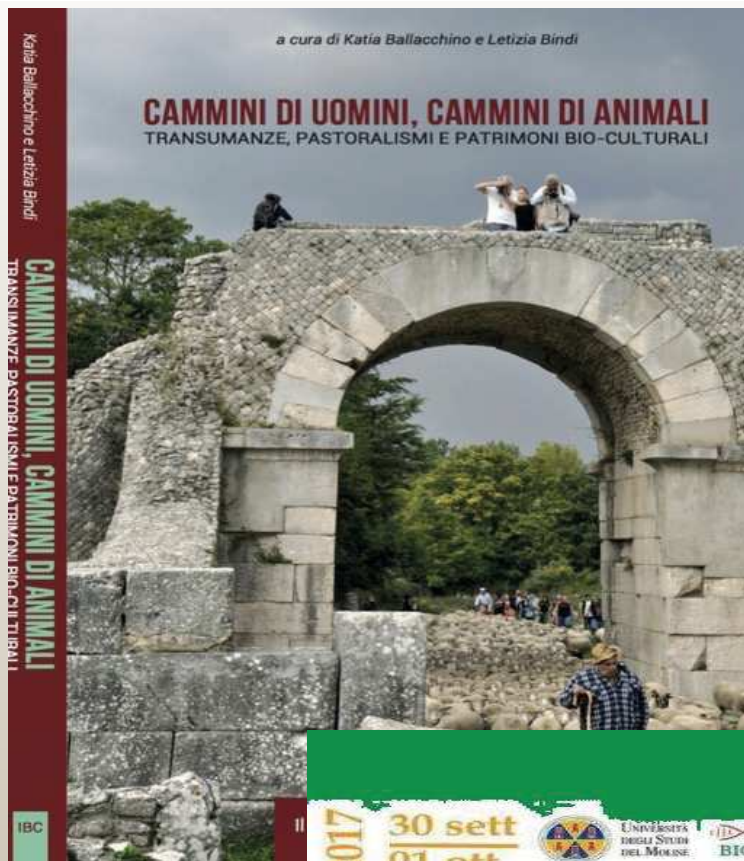




## SPACE CODIFICATION AND CULTURAL TRANSMISSION THROUGH PRACTICES







**TRANSUMANDO / 2017**

**30 sett  
01 ott**

UNIVERSITÀ TRIESTE SILEN DEL MOISSE

BIOCULT

RIANO

SAN POLO MATERA

VERNO

ZANFONARIE

CUMENANESI

MINISTERO DEL SUD E DELLE ATTIVITÀ ECONOMICHE DEL SUD-OVEST DEL VAPORE

MATESE ARCOBALENO

Monti del Matese

In cammino / n. 1923

partenza n. 03.30 (30 settembre)  
Comparto di Pecore  
m. 1400

transito n. 05.30  
C. di S. Maria  
m. 110

transito n. 08.00  
Matera  
m. 550

arrivo n. 12.30 / partenza n. 08.00 (1 settembre)  
C. di S. Maria / Loc. Pignatelli  
m. 550

arrivo n. 15.00  
S. Maria / Loc. Pignatelli  
m. 550

Settembre, andiamo.  
È tempo di migrare.

Dalla montagna al piano, un pastore,  
Antonio Innamorato e la sua famiglia, le  
sue 500 pecore, un trattore, un cammino,  
una storia...

programma e info 320.0557349 / 349.1758698

biocult

BETWEEN MEMORY AND LOCAL REGENERATION





**YOUNG SHEPHERDS OF APENNINE  
VALERIO BERARDO AT CAPRACOTTA  
CARMINE VALENTINO MOSESSO AT CASTEL DEL GIUDICE**





# BREEDING IS CARING



[www.amatricetransumanza.it](http://www.amatricetransumanza.it)





# APENINES' RE-GENDER-ACTIONS: ASSUNTA PERILLI (CAMPOTOSTO)





# APENINES' RE-GENDER-ACTIONS :

**VALERIA GALLESE**  
(AQUI-LANA, SANTO STEFANO  
DI SESSANIO)



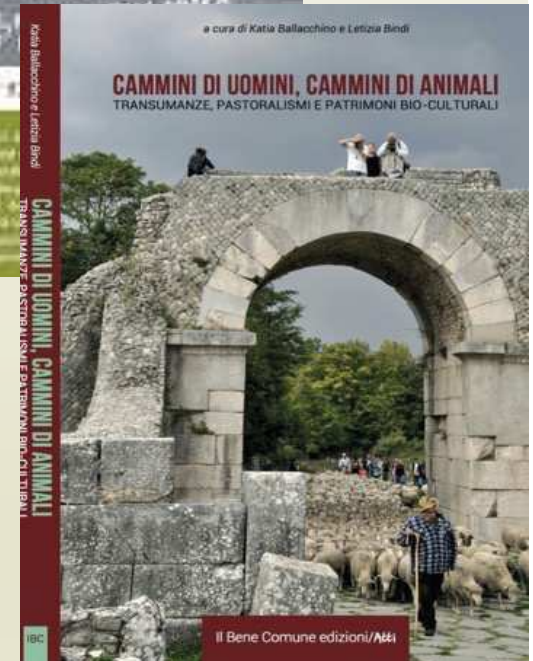
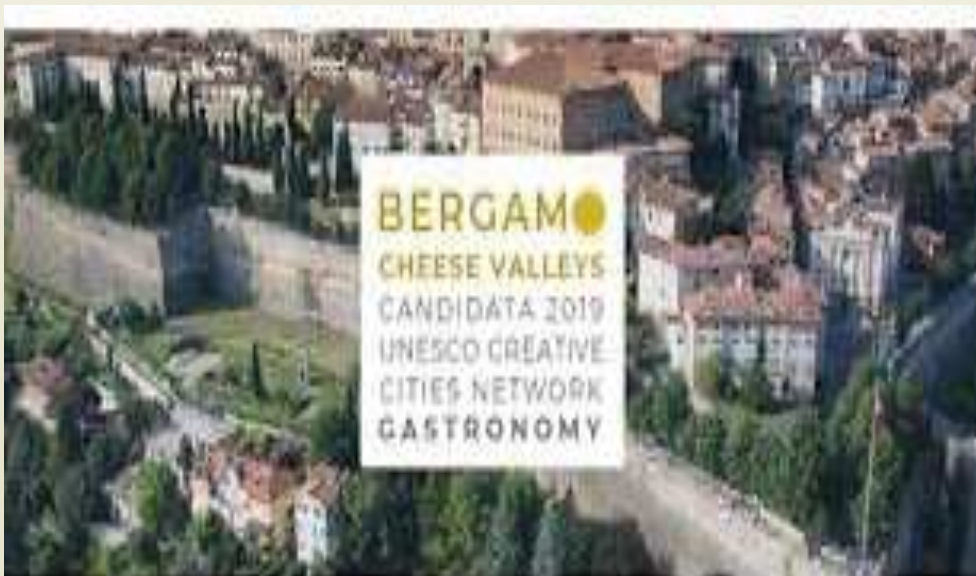




CONTEMPORARY URBAN TRANSHUMANCES IN FRANCE and SPAIN





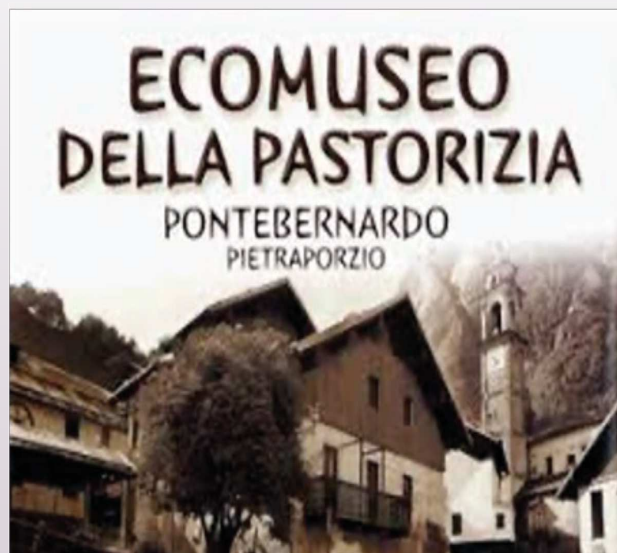


**THE PASTORAL SCENARIO OF THE BERGAMÍ FESTIVAL FOR THE  
UNESCO DOSSIER TO CREATIVE CITIES LIST:  
THE “CHEESE VALLEY” AND THE URBAN MARKET OF ITS PRODUCTS**





# ECOMUSEUMS OF PASTORALISM





**HABITAT, ROOTS, FRICTIONS....  
MULTIFUNCTIONALITY and VULNERABILITIES  
OF CONTEMPORARY PASTORALISM**







## LEGAL FRAMES AND HERITAGE CONCEPTS

DESERTIFICATION  
ABANDON / GRASSLANDS MISUSES  
POLLUTION







Volume 29 | ENVIRONMENTAL ANTHROPOLOGY  
AND ETHNOBIOLOGY

## GRAZING COMMUNITIES

Pastoralism on the Move and Biocultural Heritage Frictions



Letizia Bindi

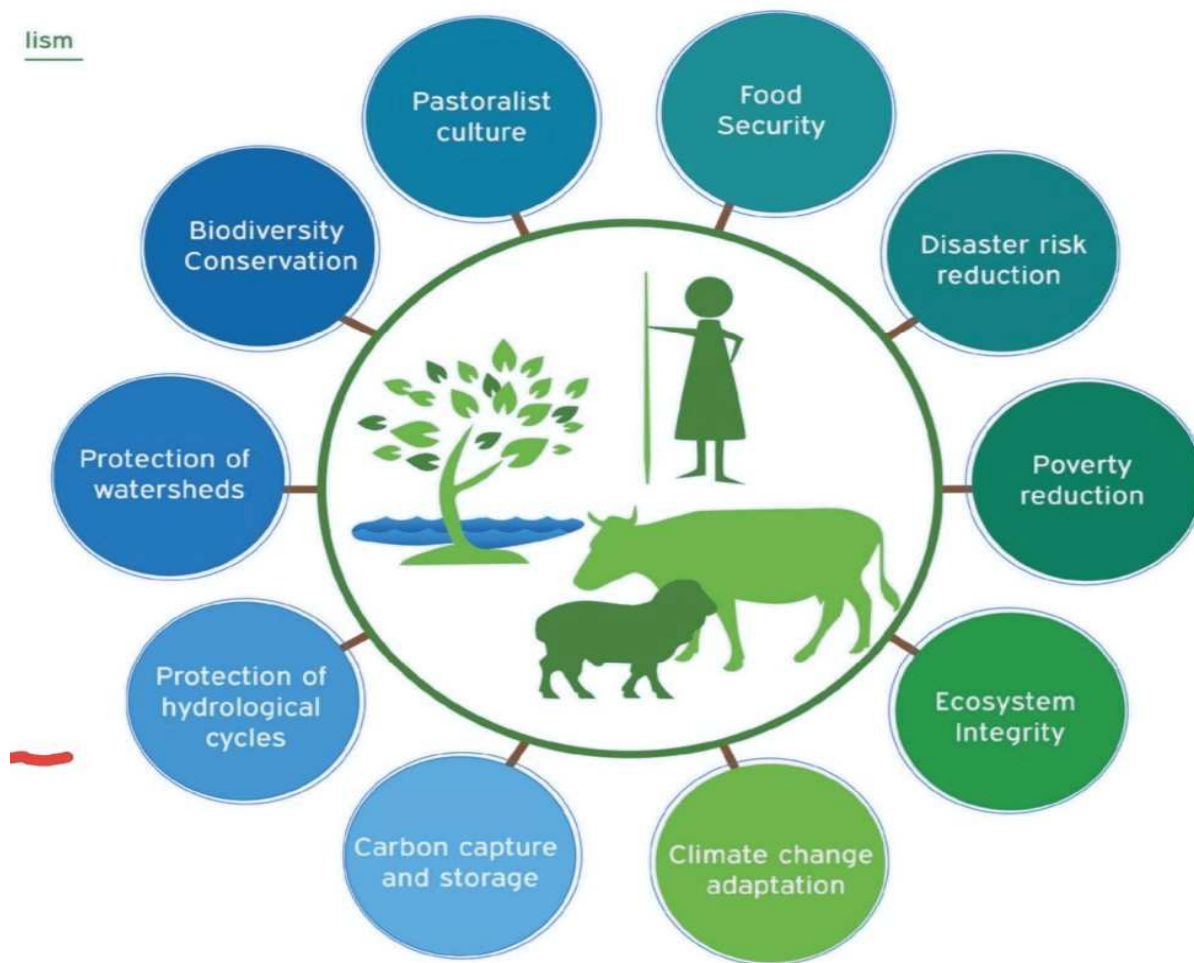


INTERNATIONAL  
YEAR OF  
RANGELANDS AND  
PASTORALISTS

# BIODIVERSITY AND LANDSCAPE CONSERVATION







**PROCUREMENT  
SERVICES**

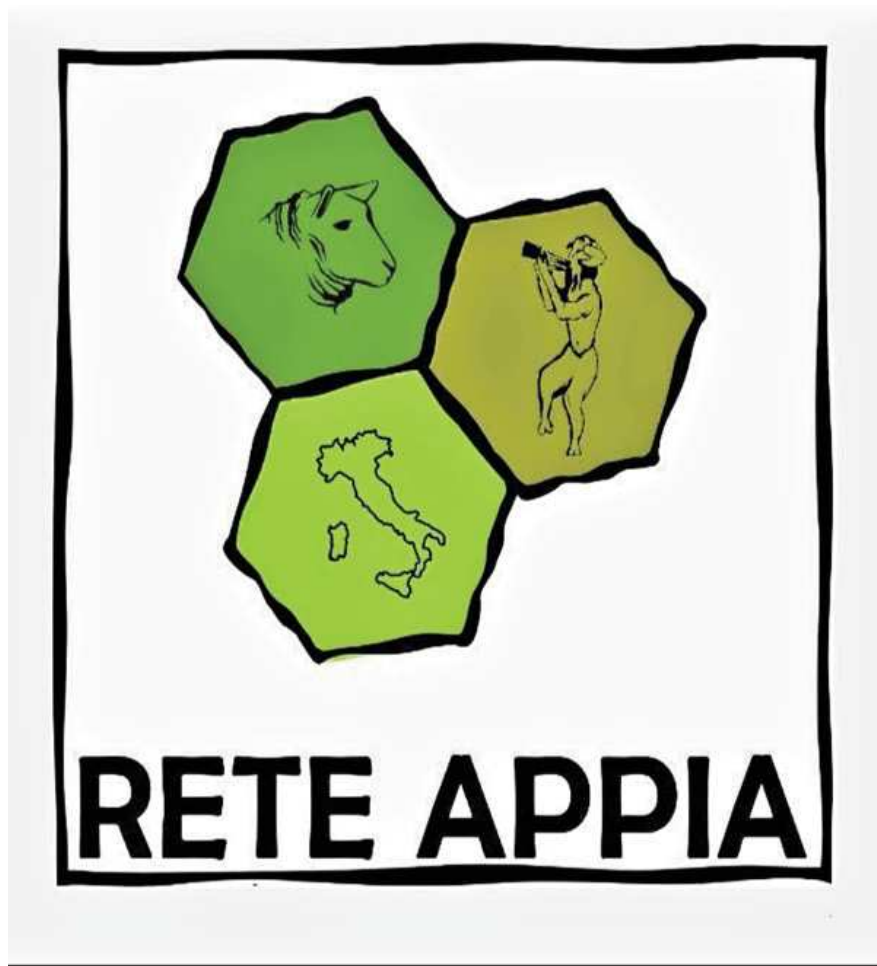
**REGULATORY SERVICES**

**CULTURAL SERVICES**

***Enabling sustainable pastoralism***

**ANIMAL AND PLANT BIODIVERSITY  
SUSTAINABLE PASTORALISM  
CULTURAL BIODIVERSITY**





**SUPPORT, ADVOCACY, KNOWLEDGE TRANSFER,  
STEWARDSHIP, REGENERATION**





**WHO's PRODUCING LOCAL BREEDS and WHY IS IT IMPORTANT?**

**WHO's the PASTORAL HERITAGE and BIOCULTURAL LANDSCAPE KEEPERS?**

**WHO's TAKING DECISIONS?**

