

Meeting
ERFP WG Documentation and Information of AnGR
Toledo, 22 May 2023

Chair:
Enrico Sturaro


ERFP
European Regional Focal Point
for Animal Genetic Resources

INSTITUT DE L'ÉLEVAGE **idele**

1

European Regional Focal Point for Animal Genetic Resources www.animalgeneticresources.net		
Chair: Enrico Sturaro, Italy		
22 nd May 2022 Monday		
Meeting of WG Documentation and Information		
12:00-12:20	Welcome and Introduction - Objectives of the WG meeting	Chair
12:20-13:00	ERFP WG Docu Info: how to move forward?	All
13:00-13:20	AnGR Strategy for Europe – Action Plan review	Chair
13:20-14:00	Development of the ERFP MyPOW for Information and Documentation conservation (review, preparation of the text)	All
14:00-15:00	Lunch break	
15:00-15:30	Development of the ERFP MyPOW for Information and Documentation conservation – second part (review, preparation of the text)	All
15:30-16:00	DAD-IS EFABIS – Update from FAO	R. Baumung
16:00-16:30	Transboundary breed TF	E. Charvolin Lemaire
16:30-17:00	Coffee break	
17:00-17:20	Election of new Chair	all
17:20-17:40	Work plan for 2023 (to be approved at Assembly)	Chair
17:40-18:00	Conclusions; AOB	Chair

2



European Regional Focal Point for Animal Genetic Resources

www.animalgeneticresources.net


Aims and Members of the WG Docu and Info

The European information system for animal genetic resources - EFABIS is essential for monitoring and an assessment of the diversity of AnGR in Europe and allows for an informed decision-making by countries from a regional perspective. Both monitoring and assessment as well as user needs might require further functionalities of EFABIS which should be identified and further developed by the ERFP Working Group Documentation and Information.

The documentation of AnGR is one of the main targets of the GPA and an important basis for informed decision-making by countries, the ERFP and FAO at the global level. Countries should be supported by the ERFP Working Group Documentation and Information in the establishment of their national inventories for AnGR.

- **Nomination of experts into the WG can only be done by NC**
- **NCs are invited to nominate experts before and soon after the GA**
- **If expert is not able to attend, NC can nominate replacement just for the specific meeting**

3



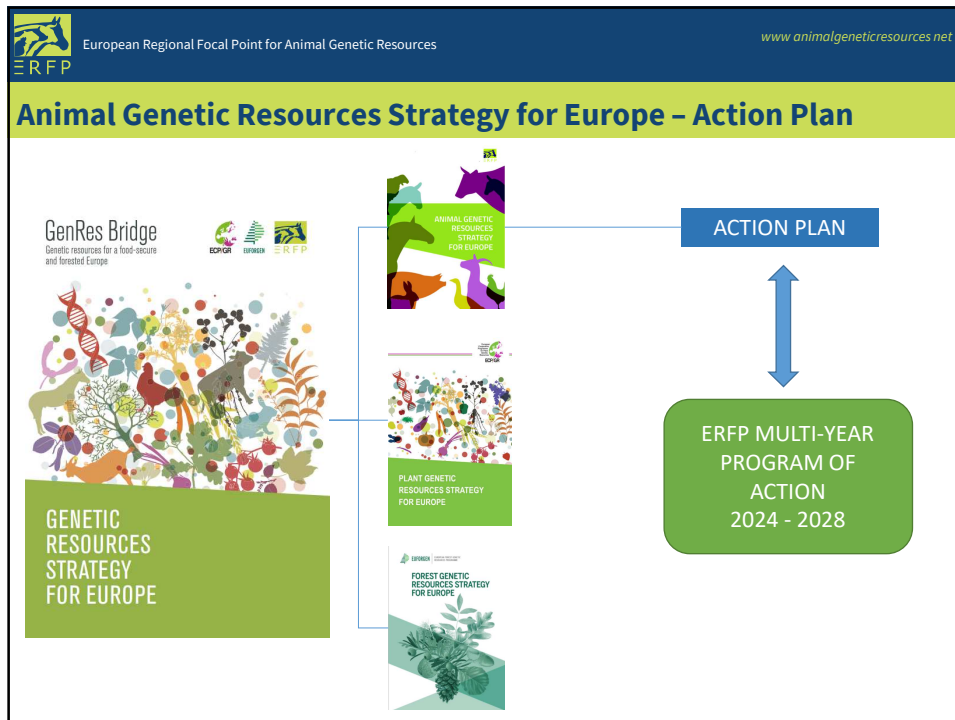
European Regional Focal Point for Animal Genetic Resources

www.animalgeneticresources.net

Activities/tasks of WG Docu and Info

- **Activities of the WG from the last Assembly - mainly focused on the AnGR action plan development, preparation of the meeting and jump start activities 2023.**
- **Preparation of joint meeting with the other ERFP WGs.**
- **Most important: finalize Action Plan from AnGR strategy; provide input for the ERFP MyPOW, finally jump start activities which we planned.**

4



5

European Regional Focal Point for Animal Genetic Resources www.animalgeneticresources.net

MyPOW for Docu and Info – current state of the draft

4 Improvement of documentation of AnGR in Europe, tools and guidelines

4.1 Updating and improvement of national data and documentation


The documentation and monitoring of AnGR are important components of implementing the FAO GPA and an important basis for informed decision-making by countries, the ERFP, the European Commission and FAO. The ERFP Working Group Documentation and Information supports the establishment of national inventories for AnGR and coordinates the updating and improvement of data in the European and global database (European Farm Animal Biodiversity Information System - EFABIS/ Domestic Animal Diversity-Information System - DAD-IS). Tools to (semi) automatically upload national data into EFABIS/DAD-IS will be developed in close collaboration between National Coordinators, ERFP and FAO. Some improvements have been achieved and explained in different workshops and training sessions this is for example the case of the new tools on ecosystem services, and ERFP will work to assess needs, user perspectives, and develop API's for data exchange in order to improve the inter-operability of population and gene bank data with other relevant databases.

The AnGR strategy sets up other KR to improve the monitoring, characterization and inventoried AnGR in the European region with specific actions in the Action plan, e.g.:

- Improve the quality and frequency of updating EFABIS through close collaboration between National Coordinators, breeding organisations and gene banks: ERFP will coordinate, stimulate and facilitate [the](#) data collection, update and improvement.
- Increase and publish the proportion of inventoried AnGR that are characterized and evaluated using genomic and phenotypic techniques and the number of studied traits in their production environment: ERFP together with ERC will facilitate and stimulate the genomic and phenotypic characterizations, research and access to the data.

The ERFP will gather the relevant information and give publicity to the main documents, guidelines- and publications of interest for AnGR. Some of them are released by FAO to facilitate the GPA, as the important Guidelines for- genomics and crioconservation.


6

 European Regional Focal Point for Animal Genetic Resources		www.animalgeneticresources.net						
Number	Recommendation of ANGR Strategy	Chapter of ANGR Strategy	Action	Related Actions	Indicator	Spatial dimension	Responsible actors	
2.1.1.1	Increase the quality and frequency of quality control through closer collaboration between national coordinators, breeding organizations and gene banks.	Monitoring / Characterisation	Regular updating and storage of breed related data in EFABIS/DAD-IS according to the FAIR principles		Annual updates of EFABIS and data completeness / EFABIS is fully compliant with FAIR principles	National/ European	National Coordinator/ ERFP WG Docu	
2.1.2.1	Increase the proportion of inventoried and evaluated genetic and phenotypic data from national coordinators and gene banks. Increase the number of inventoried and evaluated data from national coordinators and gene banks.	Monitoring / Characterisation	Initiate scientific research and collaboration that contributes to better characterization of genetic resources in Europe	2.1.2.2 & 2.1.5.1	Number of national/ EU funded research projects that include characterization of AnGR	National/ European	Governments/ National Coordinators/ Science/ EC	
2.1.2.2	Increase the proportion of inventoried and evaluated genetic and phenotypic data from national coordinators and gene banks. Increase the number of inventoried and evaluated data from national coordinators and gene banks.	Monitoring / Characterisation	Promote genomic and phenotypic characterization, genetic evaluation, data exchange and facilitate stakeholder access	2.1.2.1 & 2.1.5.1	Validated methods and guidelines / Proportion of inventoried AnGR that are characterized and evaluated / Weblinks publicly accessible data	National/ European	EURC-EAB / Interbull/ Governments/ National Coordinators/ ERFP WG Docu/ Science	
2.1.3.1	Further develop and implement policies to monitor the status of breeds in and threats to the conservation and sustainable use of AnGR.	Monitoring / Characterisation	Implement SDG indicators 2.5.1 and 2.5.2		FAO indicators 2.5.1 and 2.5.2	National/ European/ Global	Governments/ National Coordinators/ ERFP WG Docu/ Science	
2.1.3.2	Further develop and implement policies to monitor the status of breeds in and threats to the conservation and sustainable use of AnGR.	Monitoring / Characterisation	Review existing indicators, harmonize and implement relevant breed risk status indicators at European level		Report on relevant indicators to assess breed status, trends and threats	National/ European	EURC-EAB/ ERFP WG Docu/ National Coordinators/ Governments	
2.1.4.1	Improve interoperability of breeder and gene bank data with other relevant databases	Monitoring / Characterisation	Assess needs, user perspectives, and develop APIs for data exchange		Report on needs and perspectives to improve interoperability	National/ European	ERFP WG Docu/ ERFP WG In Situ/ ERFP WG Ex Situ/ FAO	
2.1.5.1	Increase the number of studied traits to strengthen the characterization of AnGR breeds, particularly local breeds, in their production environments	Monitoring / Characterisation	Gather relevant information on breed characteristics through interaction with breeders, and initiate scientific research to increase phenotyping efforts of traits less commonly assessed (adaptation, resilience, robustness).	2.1.2.1 & 2.1.2.2	Number of traits and completeness/quality of data collected from breeders / Published results of research on breed specific traits	National/ European	ERFP WG Docu/ ERFP WG In Situ/ Governments/ Science	
2.2.1.1	Boost the development and implementation of sustainable breeding programs, including genetic evaluation and selection of adapted and resilient genotypes for local production and local breeds	Sustainable use and genetic improvement	Define sustainable breeding programs and propose methods and indicators for assessing breeding programs	2.2.1.2 & 2.3.4.2	Indicators and guidelines for implementing and assessing breeding programs	National /European	EURC-EAB/ Governments/ National Coordinators/ ERFP WG In Situ/ ERFP WG Docu / Interbull / EFFAB	


Action Plan is developed and final approval is need from your side!!

Ad hoc group collect any comments, proposals today and 1 week after the end of this meeting!!

7

 European Regional Focal Point for Animal Genetic Resources		www.animalgeneticresources.net						
<h2>Work plan 2023-2024</h2>								
<h3>To be approved by the ERFP Assembly</h3>								

8

 European Regional Focal Point for Animal Genetic Resources www.animalgeneticresources.net

Work plan 2023-2024

- Regular activities: collaboration with FAO, NCs and other members of ERFP to support data entry on DAD-IS/EFABIS (Chair)
- Review existing indicators, harmonise and implement relevant breed risk status indicators at European level → transboundary breed
- Testing and supporting the development of the tool for geographic distribution of breeds
- Transboundary breed: finalisation of the paper (E. Charvolin)
- Establishment of regular process for reporting on the status of data quality and completeness in EFABIS
- Analysis of problems (at country level) in providing data → ad hoc action
- Mediterranean workshop 2024 back to back with the WG meeting (C. Ligda)
- Finalization of MYPOW (E. Sturaro)

9


ERFP

European Regional Focal Point for
Animal Genetic Resources

c/o ERFP Secretariat
IDELE
149 rue de Bercy
75012 PARIS - FRANCE

Phone1: +33 1 40 04 53 14
Phone2/ +33 7 60 00 46 88
erfp_secretariat@bf.uni-lj.si

www.animalgeneticresources.net

photos: IDELE / ERFP Secretariat

10