



EUROPEAN
REFERENCE CENTRE FOR
**ENDANGERED
ANIMAL BREEDS**

European Union Reference Center for Endangered Animal Breeds (EURC-EAB)

Sipke J. Hiemstra – Director of EURC-EAB
Toledo, 23 May 2023



Federal Office
for Agriculture and Food





EUROPEAN
REFERENCE CENTRE FOR
**ENDANGERED
ANIMAL BREEDS**

Legal framework - EU Animal Breeding legislation (2016/1012)

- Official recognition of breed societies & approval of their breeding programs.
- Facilitating (intra community) trade in purebred animals, and semen, ova, embryos.
- Implementation of breeding programmes
 - To improve or maintain the characteristics of a breed.
 - To achieve the desired breeding goal.
- Specific references and derogations for endangered animal breeds

https://food.ec.europa.eu/animals/zootechnics/legislation_en

<https://eur-lex.europa.eu/eli/reg/2016/1012/>



Designation of EURC-EAB

COMMISSION IMPLEMENTING REGULATION (EU) 2022/2077

of 27 October 2022

designating the European Union reference centre responsible for the scientific and technical contribution to the establishment and harmonisation of the methods for the preservation of endangered breeds, and the preservation of the genetic diversity existing within those breeds

(Text with EEA relevance)



EUROPEAN
REFERENCE CENTRE FOR
**ENDANGERED
ANIMAL BREEDS**

Scope of the EURC-EAB

- Bovine, Porcine, Ovine, Caprine, Equine species
- EURC-EAB works on **endangered breeds** of those animal species only
- **Responsible for the scientific and technical contribution to the establishment and harmonisation of methods for the preservation of endangered breeds, and the preservation of the genetic diversity existing within those breeds (EU 2016/1012 and EU 2022/2077)**

Funding EC DG SANTE and national co-funding

- Initial activities planned 2023-2024 – long term commitment



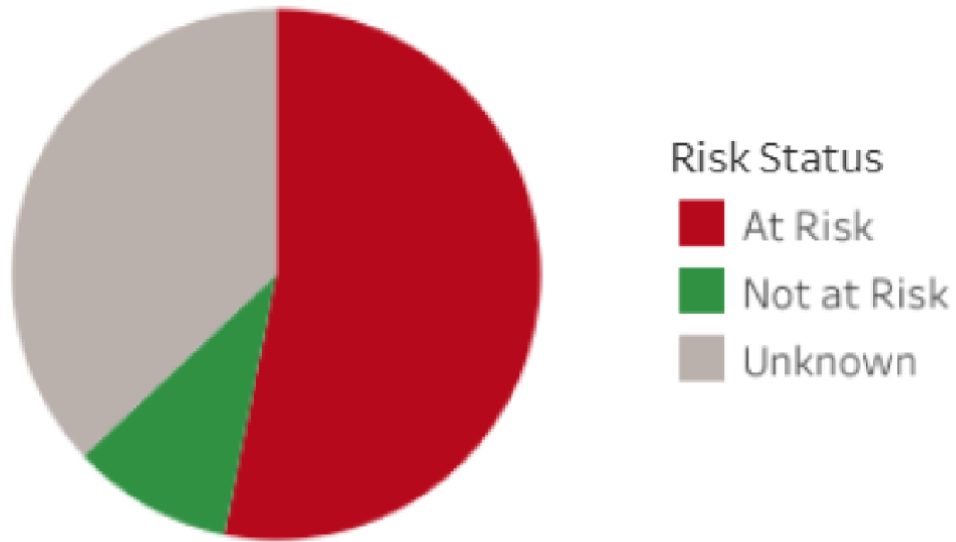
Livestock breeds in Europe - Facts



COMMISSION ON
GENETIC RESOURCES
FOR FOOD AND
AGRICULTURE

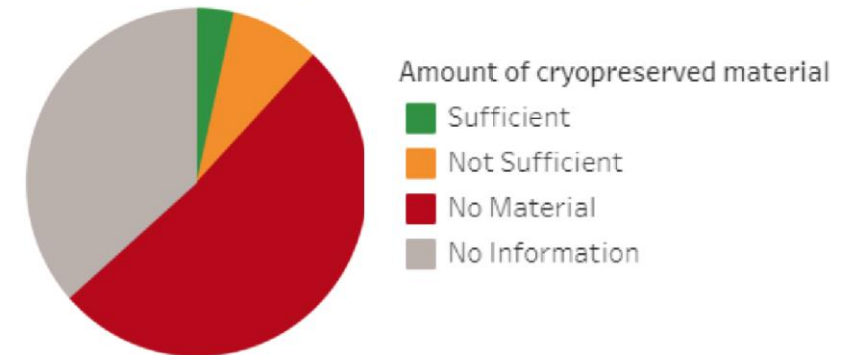


SDG 2.5.2 Percentage of local breeds at risk of extinction out of which of known status



Effective population size (N_e) often low for both local and mainstream breeds

SDG 2.5.1b Number of local breeds secured in either medium of long term conservation facilities



EURC-EAB consortium

- Wageningen Livestock Research (WLR, the Netherlands)
- Institut de l'Elevage (IDELE, France)
- Federal Office for Agriculture and Food (BLE, Germany)



EUROPEAN
REFERENCE CENTRE FOR
ENDANGERED
ANIMAL BREEDS

Core group

Coralie Danchin (IDELE)



Holger Göderz (BLE)



Sipke Joost Hiemstra (WLR)



Mirjam Spoelstra (WLR)



Lisa Balzar (BLE)



EURC-EAB - Activities – According to Article 29 (4)(b)(ii) of Regulation (EU) 2016/1012

1. Cooperation with breed societies, third parties designated by breed societies and competent authorities
2. Methods for the preservation of endangered breeds, and the preservation of the genetic diversity existing within those breeds
3. Emerging problems, international cooperation and technical expertise

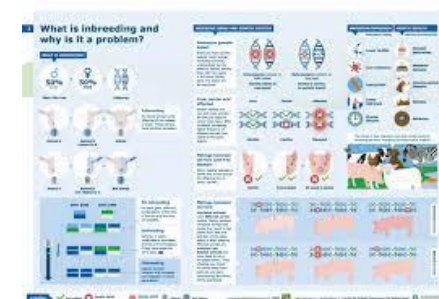
Survey → National Competent Authorities & Breed Societies

- Status of implementation of (EU) 2016/1012 among breed societies of endangered breeds
- Status of implementation of possible derogations, according to (EU) 2016/1012, for endangered breeds in breeding programmes
- Collecting national definitions and mechanisms
- Collecting questions, challenges, obstacles and other issues
- Also non-EU countries to see the situation in whole Europe



Summary of activities in our Work Programme

- Development and dissemination of
 - Guidelines for evaluating breeding programs for endangered breeds
 - Best practices and methodologies for *in situ* & *ex situ* conservation
- Guidelines for harmonisation of definitions and indicators
 - Endangered breeds
 - Risk status



Close link with European Regional Focal Point for AnGR

Network of European National Coordinators
(NC) = European Regional Focal Point for AnGR

Implementation of **FAO Global Plan of Action** –
European Coordination

Working Groups

- In situ conservation
- Ex situ conservation
- Information and Documentation

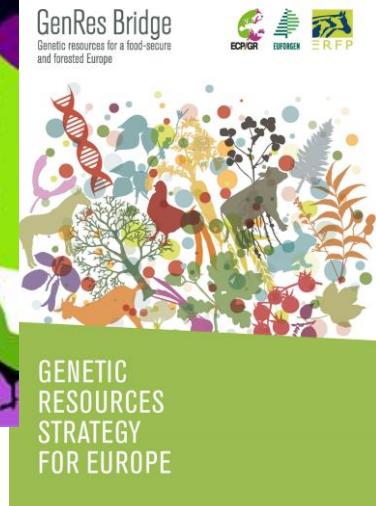
To strengthen the conservation, breeding
and sustainable use of farm animal
genetic diversity



ERFP



EUGENA



Cooperation with other European and internationally recognised organisations



COMMISSION ON
GENETIC RESOURCES
FOR FOOD AND
AGRICULTURE



Genetic evaluations
Data sharing (genotypes and phenotypes)
Transboundary breeds



**EUROPEAN
REFERENCE CENTRE FOR
ENDANGERED
ANIMAL BREEDS**



info@eurc-eab.eu



www.eurc-eab.eu