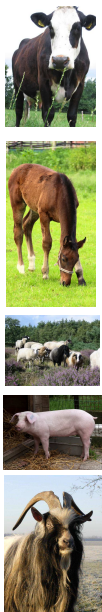


# European Union Reference Center for Endangered Animal Breeds (EURC-EAB)

Start 1-1-2023  
100keuro/year + national co-funding

Decision of Standing Committee on Zootechnics (SCZ) of EC DG SANTE - 03 Oct 2022, Brussels



## EU Animal Breeding Legislation

L 171/66      EN      Official Journal of the European Union      29.6.2016

**REGULATION (EU) 2016/1012 OF THE EUROPEAN PARLIAMENT AND OF THE COUNCIL  
of 8 June 2016**

on zootechnical and genealogical conditions for the breeding, trade in and entry into the Union of purebred breeding animals, hybrid breeding pigs and the germinal products thereof and amending Regulation (EU) No 652/2014, Council Directives 89/608/EEC and 90/425/EEC and repealing certain acts in the area of animal breeding ('Animal Breeding Regulation')

## Designation of EURC-EAB

**COMMISSION IMPLEMENTING REGULATION (EU) 2022/2077**

**of 27 October 2022**

**designating the European Union reference centre responsible for the scientific and technical contribution to the establishment and harmonisation of the methods for the preservation of endangered breeds, and the preservation of the genetic diversity existing within those breeds**

**(Text with EEA relevance)**

3

## EU – Animal Breeding Legislation – IN SHORT

LEGISLATION IS ABOUT:

- Official recognition of breeding organisations and their breeding programs
- Rules for registration of breeding animals and definition of purebred animals
- Certificates for intracommunity trade of purebred breeding animals
- ! – certification of breeding programs
- ! – specific references to ENDANGERED BREEDS

4

# Work Programme for the European Union Reference Centre for Endangered Animal Breeds (EURC-EAB)

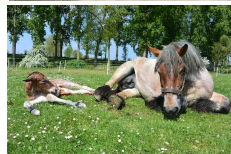
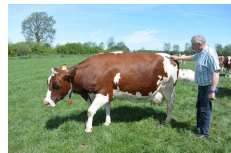
- EURC-EAB is responsible for the scientific and technical contribution to the establishment and harmonisation of methods for the preservation of endangered breeds, and the preservation of the genetic diversity existing within those breeds.
- In accordance with Article 29(2) of Regulation (EU) 2016/1012.
- The Work Programme is for the years 2023 and 2024.



5

# Scope of the European Union Reference Centre for Endangered Animal Breeds (EURC-EAB)

- Scope of Regulation (EU) 2016/1012  
Breeding animals of:
  - Bovine
  - Porcine
  - Ovine
  - Caprine
  - Equine species
- EURC-EAB works on endangered breeds of those animal species only



6

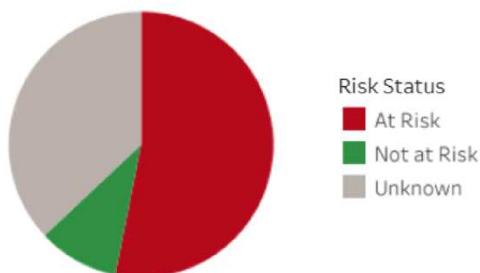
## Livestock breeds in Europe - Facts



COMMISSION ON  
GENETIC RESOURCES  
FOR FOOD AND  
AGRICULTURE

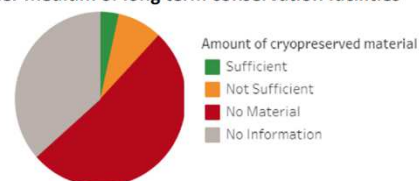


### SDG 2.5.2 Percentage of local breeds at risk of extinction out of which of known status



Effective population size ( $N_e$ ) often low for both local and mainstream breeds

### SDG 2.5.1b Number of local breeds secured in either medium of long term conservation facilities



7

## EURC-EAB - Consortium

- Wageningen Research, Wageningen Livestock Research (WLR, the Netherlands)
  - [Coordinator of Consortium and Director](#)
- Institut de l'Elevage (IDELE, France)
  - [Direct link to European Regional Focal point for Animal Genetic Resources \(ERFP\)](#)
- Federal Office for Agriculture and Food (BLE, Germany)
  - [Link to international organisations \(e.g. FAO\)](#)



8

# European Regional Focal Point for AnGR

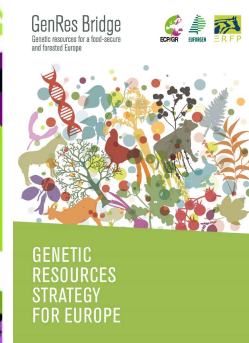
**Network** of European National Coordinators  
(NC) = European Regional Focal Point for AnGR

Implementation of **FAO Global Plan of Action** –  
European Coordination

## Working Groups

- In situ conservation
- Ex situ conservation
- Information and Documentation

## Task Forces and Ad Hoc Actions



9

## EURC-EAB - Activities – According to Article 29 (4)(b)(ii) of Regulation (EU) 2016/1012

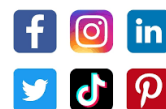
1. Cooperation with breed societies, third parties designated by breed societies and competent authorities
2. Methods for the preservation of endangered breeds, and the preservation of the genetic diversity existing within those breeds
3. Emerging problems, international cooperation and technical expertise



10

## Sub-activity 1.1 – Develop and maintain EURC website and EURC contact point

- Contact point
- Website
- Frequently asked questions (FAQ)
- Communication with network
  - NCA
  - breed societies
  - third parties
  - other stakeholders
- Collecting (emerging) questions/problems



11

## Sub-activity 1.2 - Survey on status of implementation of (EU) 2016/1012 for endangered breeds

- Status of implementation of (EU) 2016/1012 among breed societies of endangered breeds
- Status of implementation of possible derogations, according to (EU) 2016/1012 for endangered breeds in breeding programmes
- Collecting questions, challenges, obstacles and other issues through questionnaire



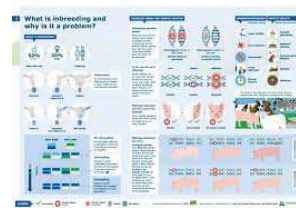
→ Covering whole Europe – in collaboration with ERFP



12

## Sub-activity 1.3 - Disseminate guidelines and tools for implementing breeding and conservation strategies of endangered breeds

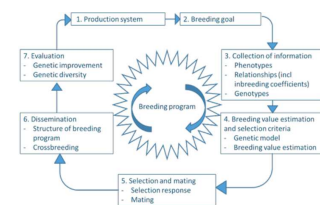
- Collecting existing guidelines, best practices, methodologies
  - Breeding and conservation programs for endangered breeds
  - Preservation of the genetic diversity existing within those breeds
- E.g.
  - FAO In Vivo Guidelines
  - FAO Ex Situ Guidelines
  - Other methods and best practices



## Sub-activity 2.1 - Guidelines for evaluating breeding programmes for endangered breeds

- Assessment tool to evaluate breeding programs
- To support preservation of endangered breeds and genetic diversity within those breeds

→ Collaboration with Interbull / Eurc for Zootechnics (Bovine breeding) and ICAR on performance recording/genetic evaluation methods for bovine endangered breeds





## Sub-activity 2.2 - Harmonisation of breed risk status indicators

- Suggestions and advise towards harmonisation of:
  - Minimum criteria for classification of a breed as “endangered breed”
  - Parameters for assessing breed risk status and genetic health (demographic, genetic, socio-economic, etc)
  - Interpretation of term “hardy sheep breeds” (EU 2016/1012)
  - Interpretation of definition of “local breeds that are in danger of being lost to farming” (EU 807/2014)



→ Collaboration with ERFP Working Group Documentation and Information



15

## Sub-activity 2.3- Ex situ conservation of endangered breeds as a complementary tool for in situ conservation

- Breeding program support and long term conservation of endangered breeds
- Determine needs and challenges to implement complementary ex situ conservation strategies for relevant species and breeds
- Make available best practices and guidelines
- Emerging issues, in relation to EU Animal Breeding and/or EU Animal Health legislation

→ Collaboration with ERFP Working Group Ex Situ Conservation and EUGENA genebank network



16



### Sub-activity 3.1 – Training and dissemination through webinars and conferences

- Webinars for different target groups
- Presentations at conferences, workshops and other meetings at European and national level
- Presentations at meetings organized in collaboration with other organisations (e.g. ERFP, ICAR/Interbull, EAAP, EFFAB, FAO, SAVE)



17

### Sub-activity 3.2 – Cooperation with European and internationally recognised organisations

- Relevant international organisations, including:



18

### Sub-activity 3.3 – Provide input and technical expertise for the Standing Committee on Zootechnics and for exchange between Member States

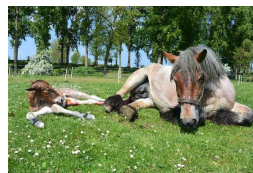
- Provide technical expertise to (meetings of) the Standing Committee on Zootechnics
- Upon request of SCZ, discuss technical issues, provide recommendations
- Signalling, identifying and collecting (emerging) issues and challenges



19

Thank you for  
your attention

EURC-EAB



20