

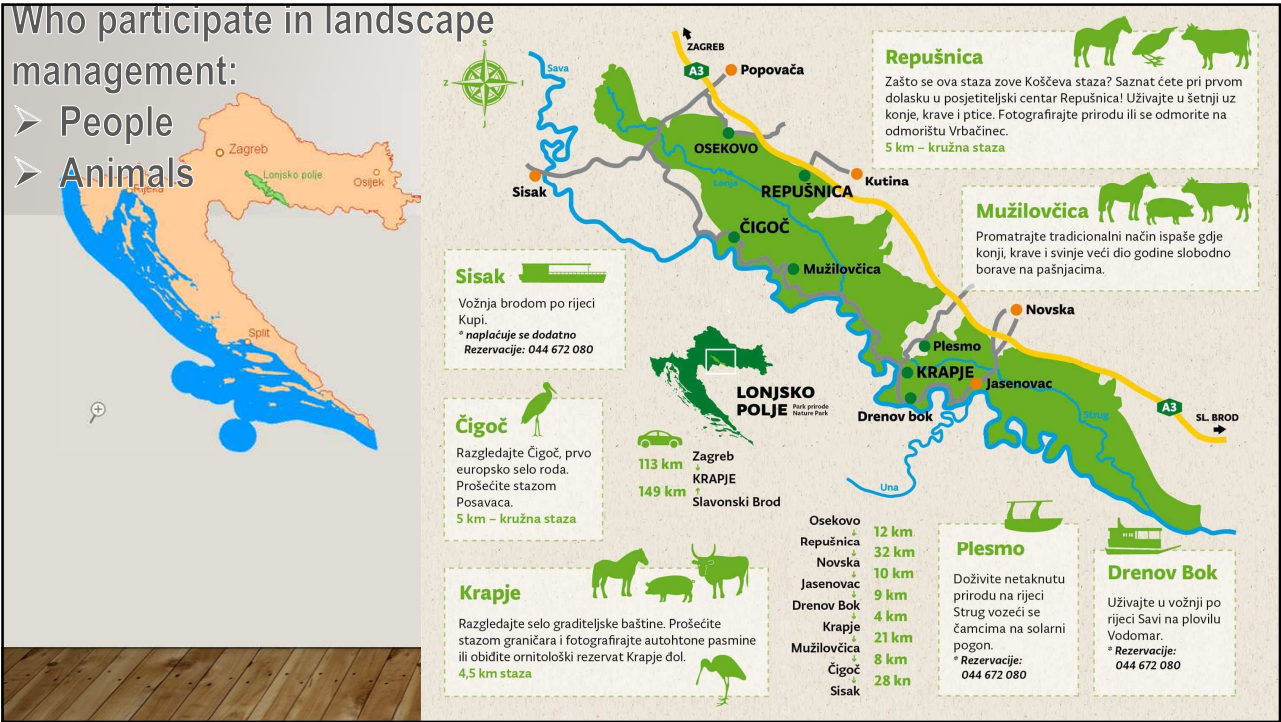


1

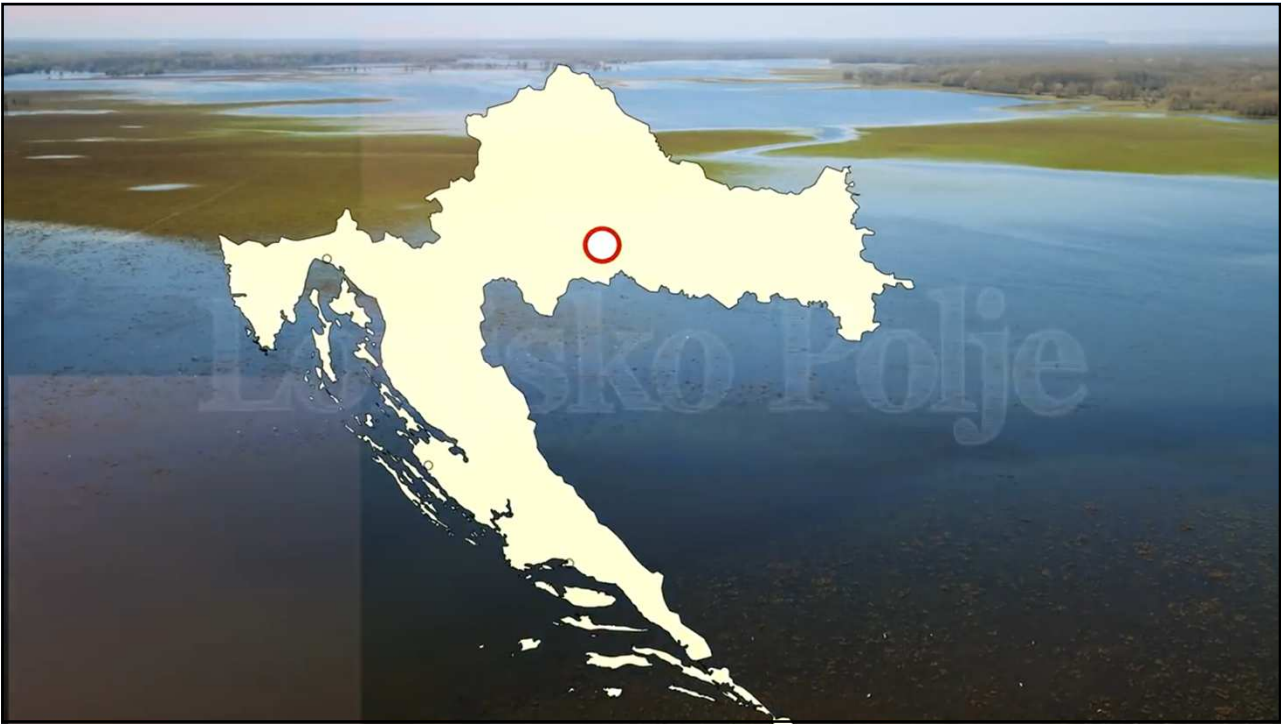
FACTS - LONJSKO POLJE NATURE PARK

- Lonjsko polje nature park: it is one of the biggest and preserved natural flood areas in Europe **≈ 50,650 hectares**
- One of the last areas in Europe where traditional grazing is still preserved, and livestock still roams freely on large joint pastures.

2



3



4

LOCAL PEOPLE

- Local people - *pasture management*
- Animal production – extensive traditional system
- Primary benefits:
 - Calf (meat production)
 - Horse (meat production)
 - Pigs (meat production)
- Secondary benefits;
 - Landscape management, rural tourism, ...



5



6



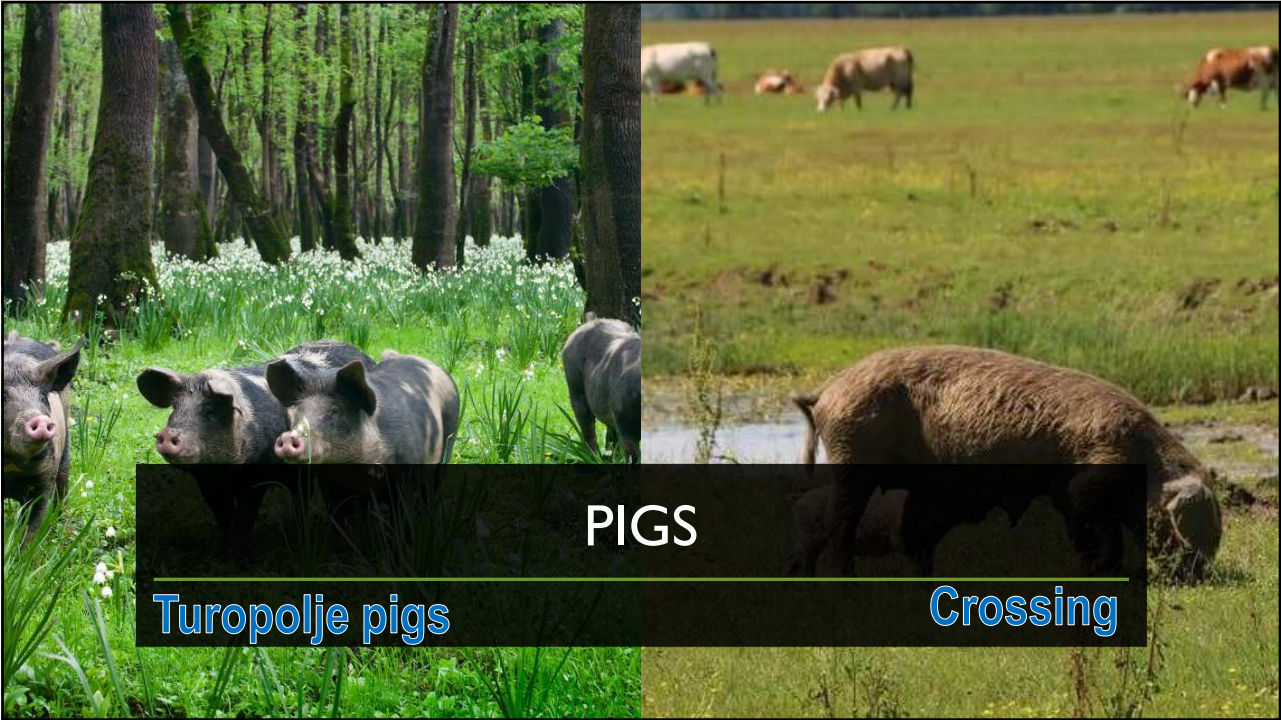
7



8



9



10



11



12



13



14



15



16



17