

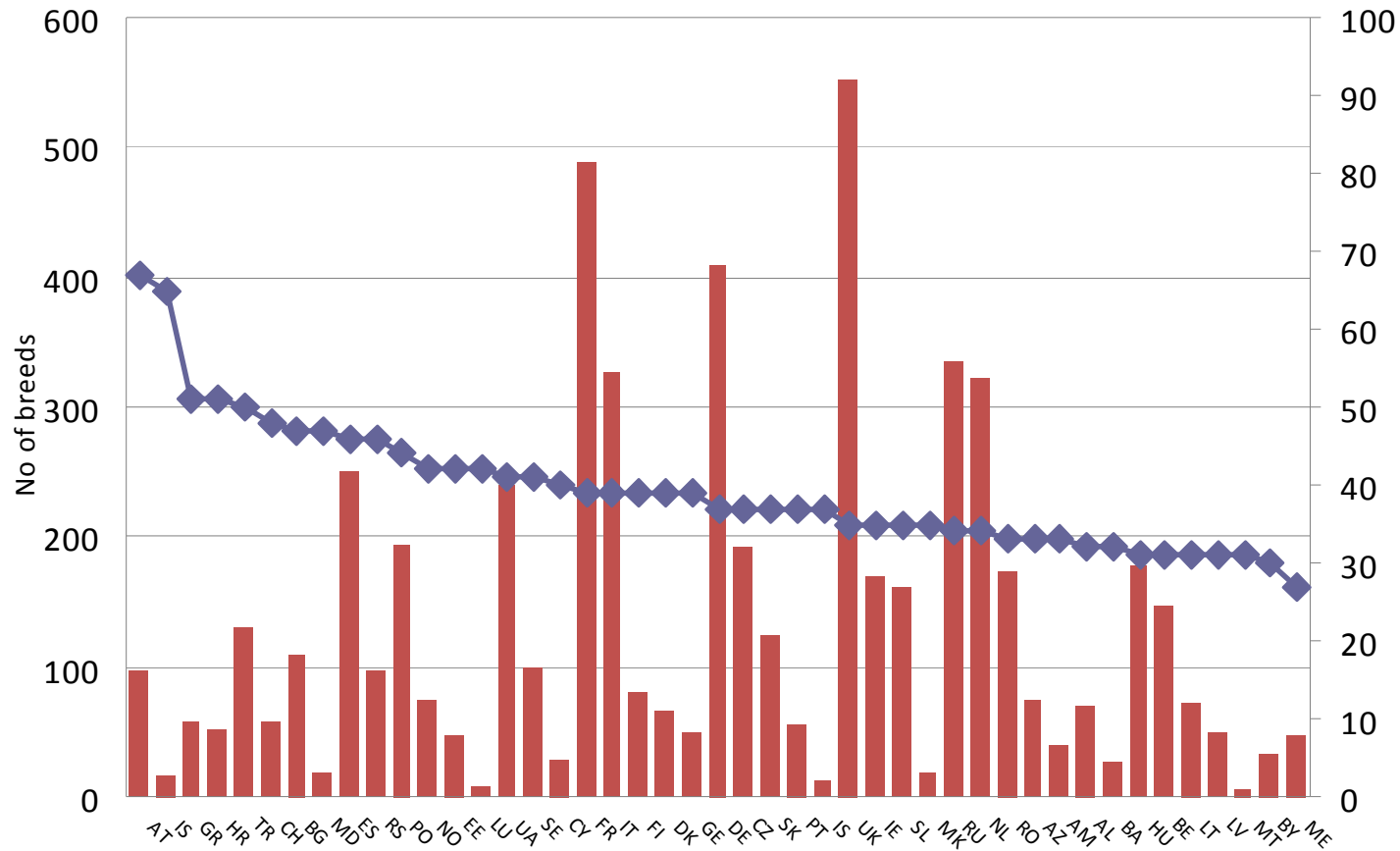
# **ERFP WG “documentation and information”**

**Annual Report**  
**Bratislava, 25.08.12**

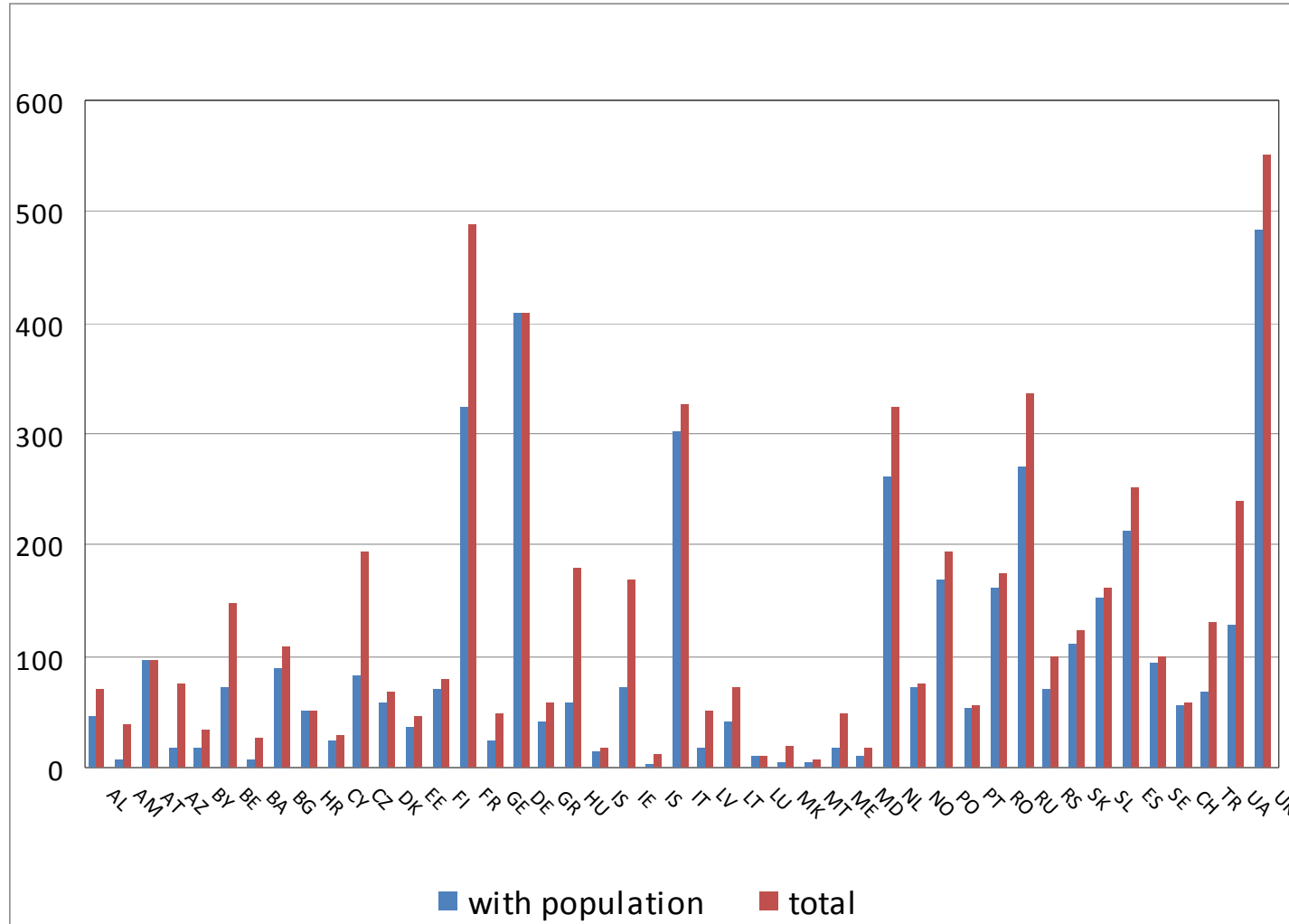
*Christina Ligda, Chair  
on behalf of the WG*

- Status and Trends Report
- Annual Activities Report

# Degree of completeness of EFABIS and number of breeds per country



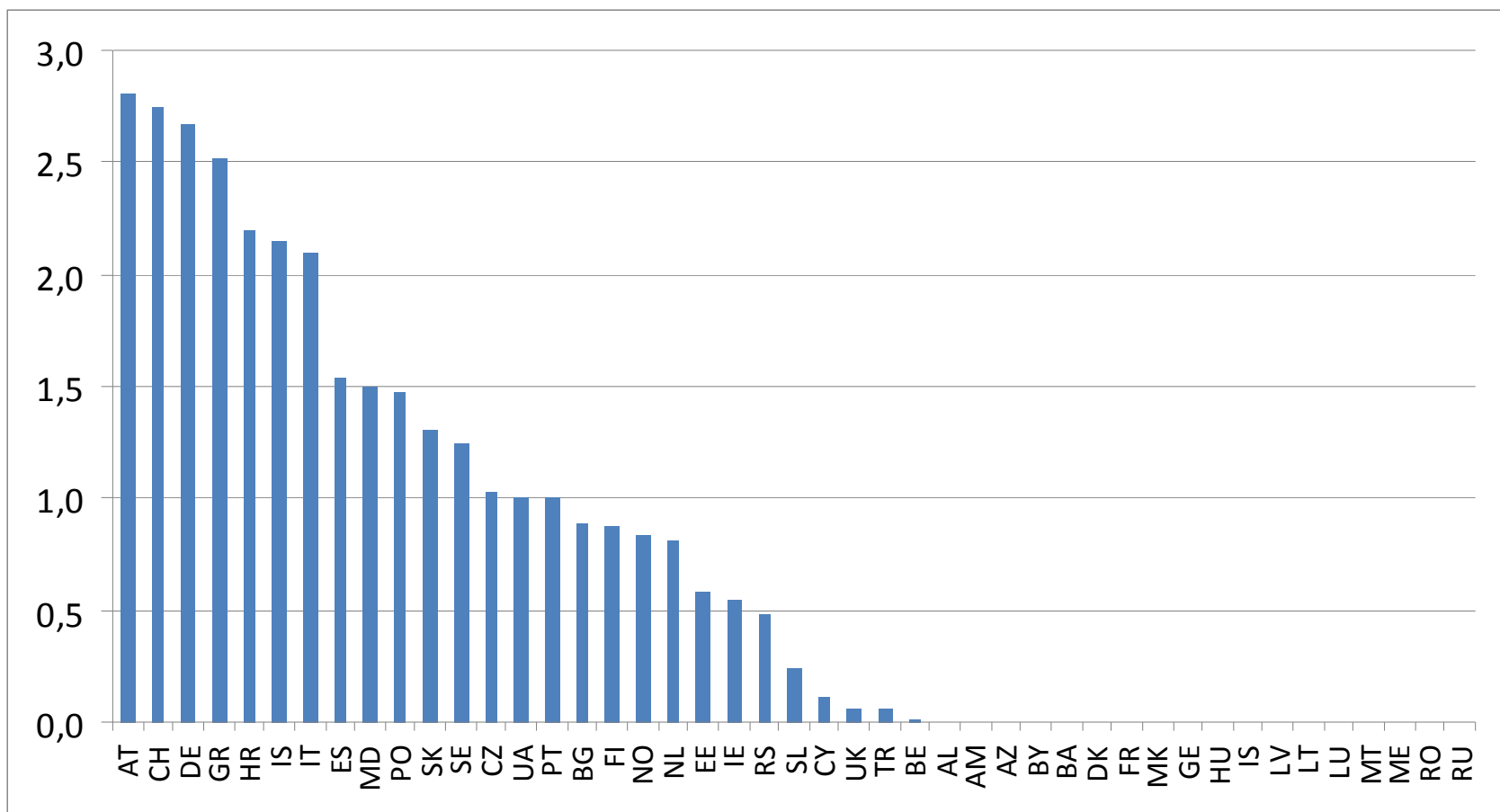
# Number of breeds with population data - total number of breeds recorded in EFABIS



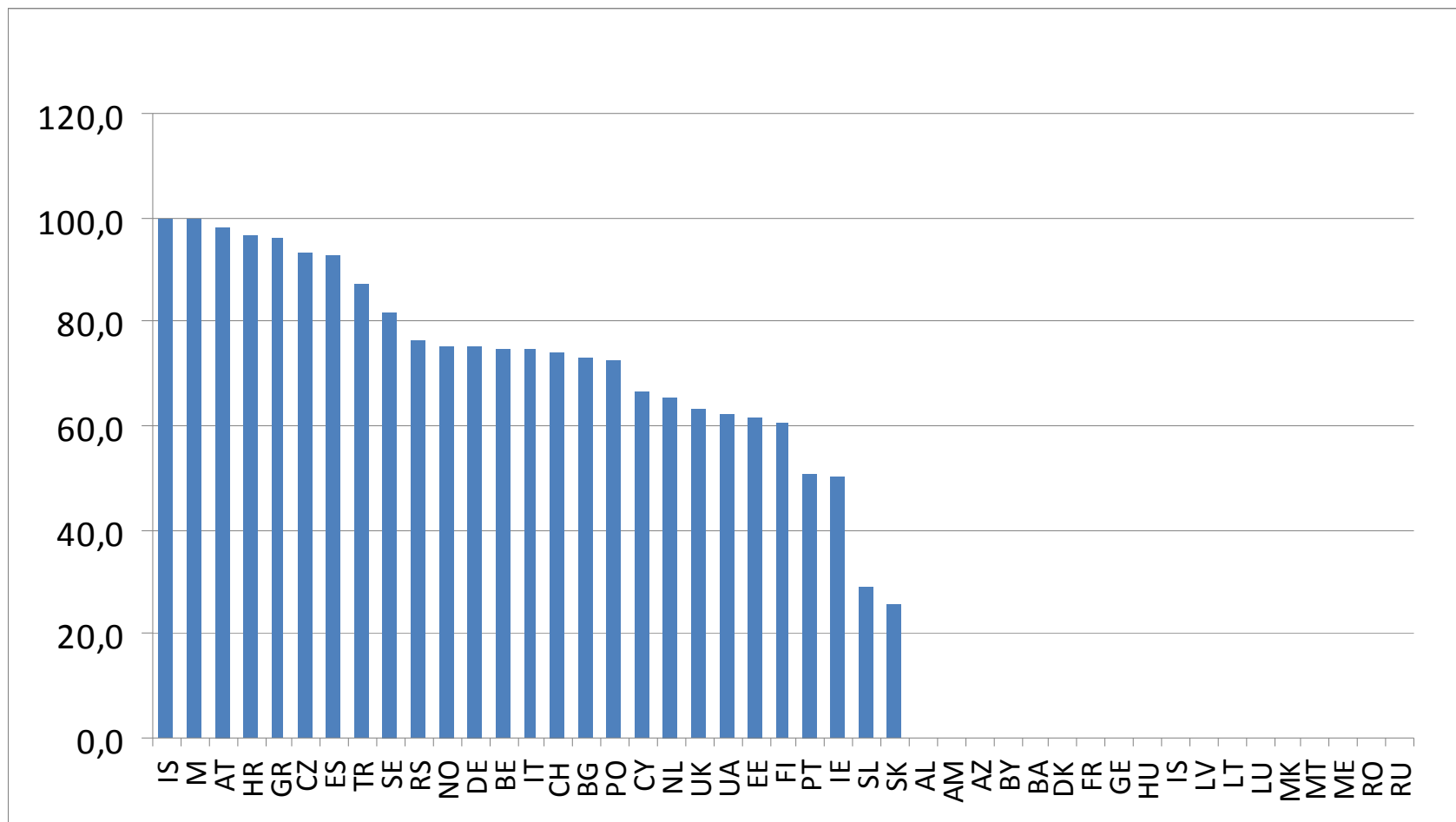
## Number of countries and year of last update of EFABIS

Year of last update	Number of countries
2012	18
2011	4
2010	2
2009	3
2008	1
2007	17

## Frequency of updating the population size in EFABIS (years 2007-2011)



# Degree of completeness of EFABIS based on PDI (years 2007-2011)



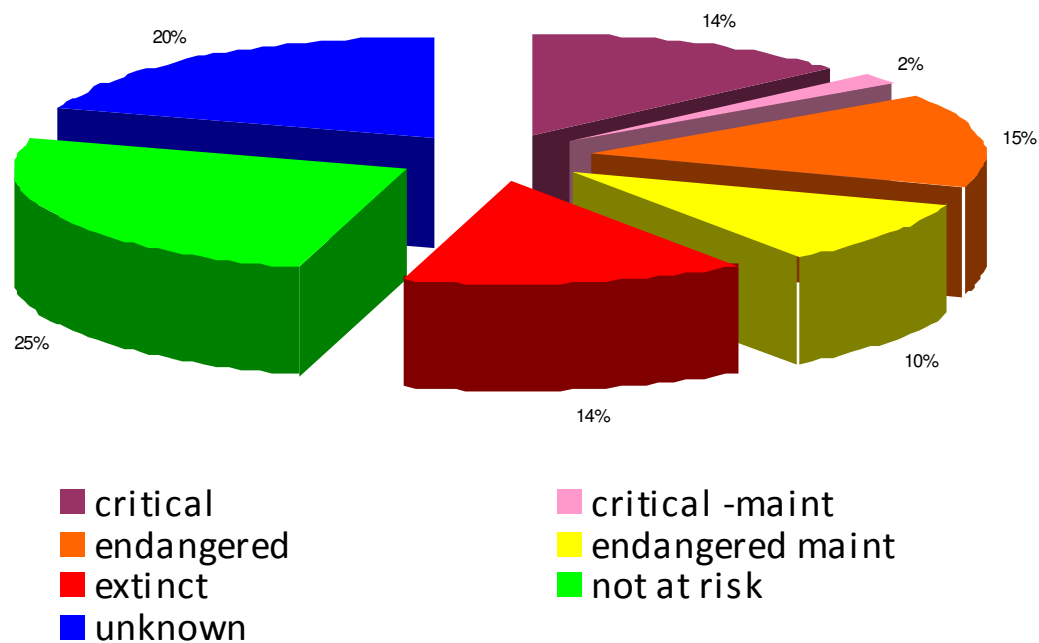
# Classification of European local and transboundary breeds by risk status

<b>Risk Status</b>	<b>Local</b>	<b>Regional</b>	<b>International</b>
unknown	680	43	50
critical	454	52	20
critical maintained	61		
endangered	523	141	58
endangered maintained	333*		
not at risk	861	456	1603
Extinct	497	8	

\* Error in table3, page 6 in the circulated version

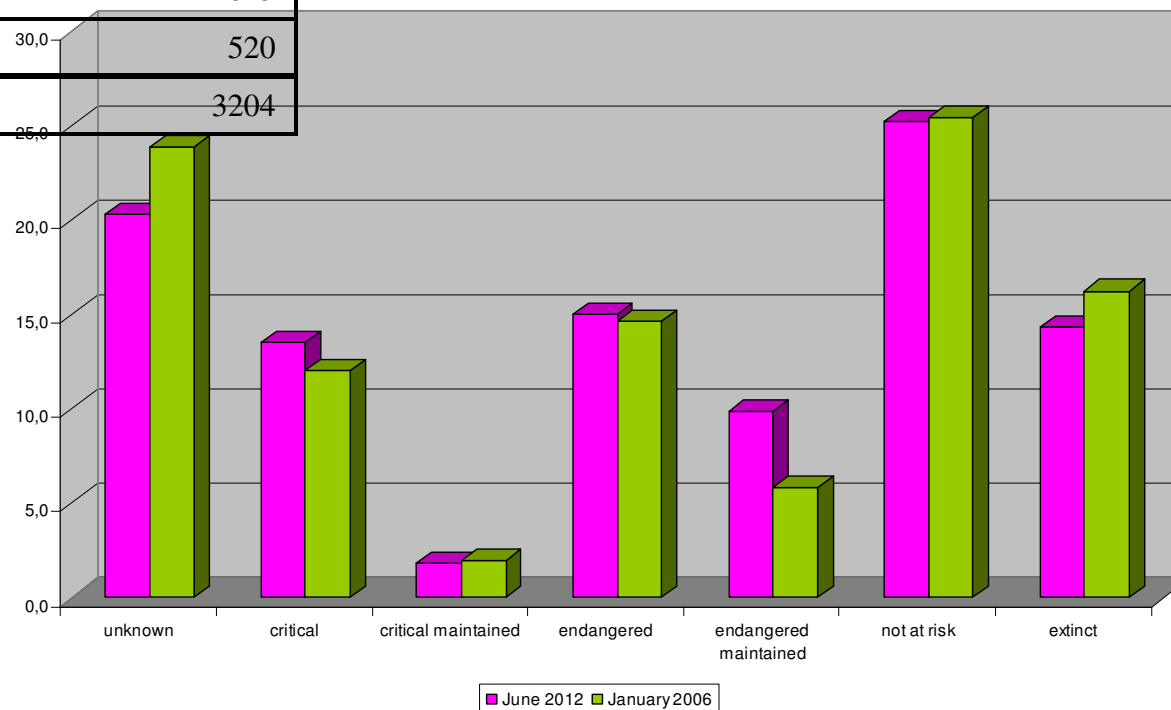


# Distribution of local breeds by risk status



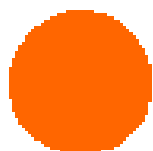
## Status of the European farm animal breeds (local) in the years 2006 and 2012

Risk Status	June 2012	January 2006
unknown	705	764
critical	469	386
critical maintained	62	63
endangered	521	469
endangered maintained	342	187
not at risk	876	815
extinct	497	520
<b>TOTAL</b>	<b>3472</b>	<b>3204</b>



- Transboundary breeds

Transboundary breed: **Buša**



Number of countries reporting the breed: **1**

Number of countries reporting the population data: **1**

Estimated population size: **275**

Buša

Most common name	Country	National risk status	Risk index	Total population size - lower limit	Total population size - upper limit	Number of breeding females	Number of breeding males	Percentage of females being bred pure
Buša	Montenegro	endangered-maintained						




Transboundary breed: **Mediterranean**



Number of countries reporting the breed: **3**

Number of countries reporting the population data: **2**

Estimated population size: **1500287**

Most common name	Country	National risk status	Risk index	Total population size - lower limit	Total population size - upper limit	Number of breeding females	Number of breeding males	Percentage of females being bred pure
Mediterranean	Brazil	not at risk		1500000	1500000	600000	5100	50
Mediterranean	Congo	critical		287		285	2	100
Mediterraneo	Guatemala	unknown						

Transboundary breed: **Tarentaise**



Number of countries reporting the breed: **9**

Number of countries reporting the population data: **4**

Estimated population size: **15215**

Most common name	Country	National risk status	Risk index	Total population size - lower limit	Total population size - upper limit	Number of breeding females	Number of breeding males	Percentage of females being bred pure
Tarentaise	Morocco	endangered		301	301			
Tarentaise	Albania	endangered		150		150		100
Tarentaise	France	not at risk		14140		14000	140	85
Tarentaise	United States of America	endangered-maintained		624	624			
Tarentaise	Brazil	unknown						
Tarentaise	Egypt	unknown						
Tarentaise	Tunisia	unknown						
Tarentaise	Burkina Faso	unknown						
Tarentais	Mali	unknown						

Transboundary breed: **Trakehner**



Number of countries reporting the breed: **10**

Number of countries reporting the population data: **5**

Estimated population size: **110340**

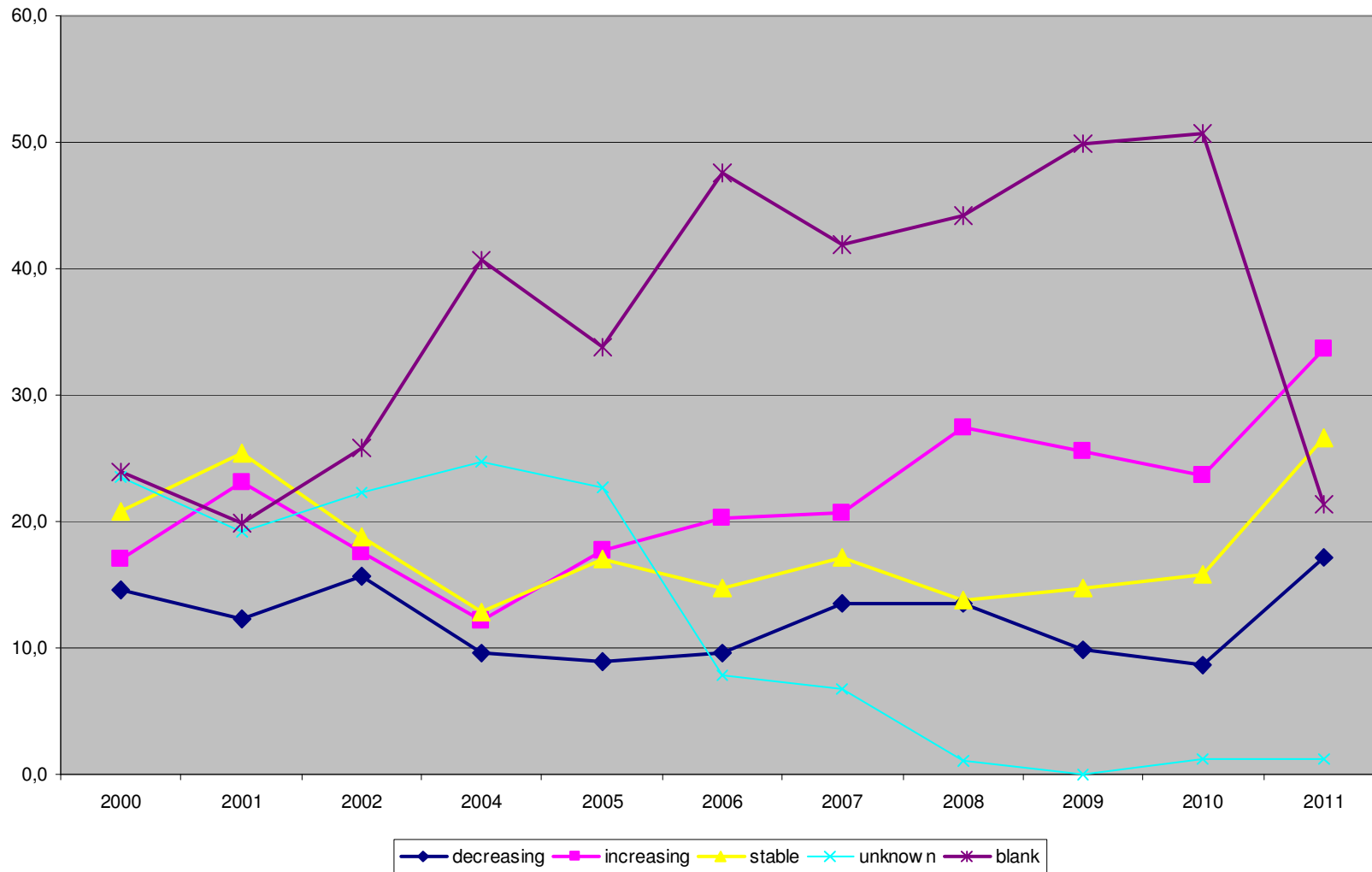
Most common name	Country	National risk status	Risk index	Total population size - lower limit	Total population size - upper limit	Number of breeding females	Number of breeding males	Percentage of females being bred pure
Trakenen	Belarus	not at risk		98610	98610			
Trakehner	Denmark	endangered		100	100			
Trakener	Estonia	endangered-maintained		400	500	115	20	
Trakeninskaya	Russian Federation	not at risk		10430	10430			
Trakenenian	Ukraine	endangered		300	300			
Trakehner	United Kingdom	unknown						
Trakehner	France	unknown						
Trakenai	Lithuania	unknown						
Traken	Latvia	unknown						
Trakehner	Bulgaria	unknown						

# Discussion on transboundary breeds

- Revision of the list of transboundary breeds is required
- The outputs have no information on the origin of the breed (native / locally adapted / exotic)
- Local breeds in a country are considered as international (FAO categorisation)
- Make use of the information collected during several ERFP projects



# Population trends overall species (2000-2011)



- Are we satisfied with this image?
- Rather limited degree of completeness
- Not regular updates
- Confusions on the information to be entered
- Reliability of the data?
- As a result → Not wide use of the tools

## Points for discussion - 1

- Review and correct old data (both population and description)
- Review the list of the transboundary breeds and correct / update the data in EFABIS
- Propose amendments to existing reports / or new reports specific for the European node

# Points for discussion – 2

## Reports

- Revise the report of transboundary breeds (information on the country of origin, or classify the breed as native, locally adapted, exotic)
- Possible new reports:
  - *Degree of completeness of EFABIS and number of breeds per country*
  - *Number of breeds with population data compared with total number of breeds*
  - *Frequency of updating the population size in EFABIS (for a specific period of years)*
  - *Degree of completeness of EFABIS based on PDI (for a specific period of years)*
  - *Trends of population size by species*
  - *Population trends over the years overall species or by species for a given period of years*

## Points for discussion – 3

- Establish a regular update of population data in EFABIS by the NCs
- Develop a way to facilitate data transfer (import / export) to EFABIS, at least for the population data

- Annual Activities Report

# WG Annual Meeting in Padova

- Presentation of MoU (FAO-EAAP-ERFP) and LoA (EAAP-ERFP)
- Description of production environment: A new module in the Domestic Animal Diversity System (DAD-IS)
- EFABISnet – current status and future development
- Status of EFABIS update - Analysis of data – Preparation of reports
- Status and trends of animal genetic resources: Preparing the Status and Trends Report
- Workplan
- Representative of the ERFP in the EFABIS Management Committee

# Workplan – Key Issues

- Report of the annual data analysis from EFABIS that will be presented to the ERFPA Assembly
- In this context a smaller group worked in Thessaloniki (Meeting in June)
- Future priorities for the WG, including the following:
  - Facilitate population data upload and export
  - Facilitate data (especially population data) entering
  - New data/outputs relating to the PEDs module
  - New outputs at regional level
  - Revision of existing data
  - Degree of completeness (relating to the PDI mentioned above)



- Next WG meeting (date not defined yet)
  - Technical meeting to conclude to specific proposal on the new set of reports / or revision of existing specific for the European node
  - Evaluate the reliability of the data
- Enhance the collaboration and active participation of all members
- Possibility for extra participants depending on topic (and resources availability)

# Representative of ERFP in EFABIS Management Committee

- Role of the Management Committee
  - Ensures the efficient implementation and operability of EFABISnet and DADis
  - On a rotational basis one of the members each year ensures communication between members and node managers
  - Handles communication with EFABISnet members and ERFP WG “docu info”
- ERFP
  - Stimulate and coordinate the maintenance and further development of national regional AnGR databases, encourage European Information networking
- ERFP through its WG
  - support EFABIS by seeking to update national data on regular basis
  - analyse the information on annual basis
- The Annual Assembly is to decide on the representative of ERFP
- Suggestion from the Padova meeting (Secretariat + WG )?